



Instructions for Use and Maintenance

Excavator Blade TR-250SH1 / TR-300SH1



The picture shows the model TR-300SH1 with optional



Note!
Read instructions before use



TREJON FÖRSÄLJNING AB
Företagsvägen 9
SE-911 35 VÄNNÄSBY
SWEDEN
Tel: + 46 (0)935 39 900
Webb: trejon.se



SAFETY SYMBOLS

NB! This warning symbol is used in this instruction manual to call attention to safety instructions that you, your employees or any other persons that may come in contact with the equipment must read and understand. Neglecting these instructions may cause serious injury or even death.

This symbol means:



WARNING!
CAUTION!
YOUR SAFETY IS
ENDANGERED!

Words of warning

Pay special attention to the words **WARNING!**, and **NOTE!!** in the safety instructions. The words have been chosen according to the following principles:



WARNING!: This sign is used to identify potential hazardous situations that, if not avoided, can lead to serious injury or even death. These include situations that may occur when safety equipment and/or safety shields are removed. The words of warning can also be used to alert about dangerous use.



NOTE! Failure to observe this warning could result in light personal injuries. The sign is also used to indicate that disregarding of these instructions may cause damage to the machine.

Dear Customer,

We congratulate you to your choice of a OPTIMAL product that offers quality and performance with reliable service.

By reading the manual and following its recommendations you will ensure a long and effective use of the equipment.

We have produced this manual for you to get a good understanding of equipment functions and to know which safety and maintenance instructions to follow when working with it.

If any question should arise when using the equipment or when reading this manual, you are welcome to contact us for further information.

TREJON AB
Företagsvägen 9
SE-911 35 Vännäsby
Sweden

Tel: + 46 (0)935 39 900

Email: info@trejon.se

Website: www.trejon.se

Honoured retailer,

in order for the guarantee to be valid and to fulfill all legal requirements, we ask you to fill out the guarantee form together with the customer and register at **trejon.se**

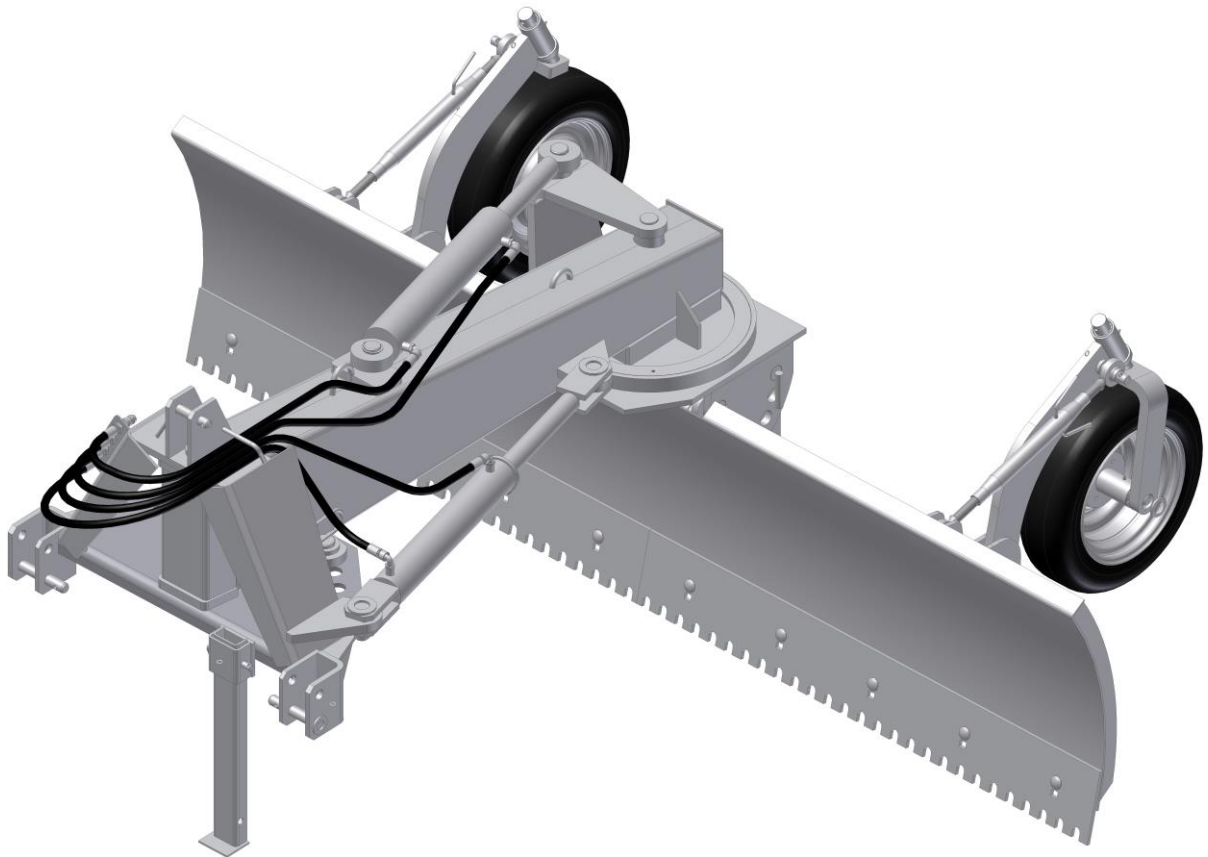
The guarantee is valid from the day the equipment is handed over to the customer.

Delivery checklist:



Check for transport damages. Inform the transporting company.	
Check the equipment thoroughly and make sure that all packing material has been removed. Dispose packing material in an environment friendly way	
Check that the delivery is complete according to the order/delivery note.	
Check that the blade is lubricated.	
Check tyre pressure	
Check that the wheel nuts are tightened. The operator must retighten the wheel nuts after a few working hours.	
Go through and with help of the manual explain start up, use and maintenance of the equipment and it's accessories to the customer.	
Perform a test run	
Operating manual handed over to customer	
Fill out the guarantee form with the customer and register at trejon.se	

Fill out the serial number of the equipment to the right.	S/N:
---	------



■ TABLE OF CONTENT

1	Introduction	8
1.1	OPTIMAL Excavator blade	8
1.2	Description	8
1.3	Detailed description	9
1.4	Technical data	10
2	Safety instructions	11
2.1	Safety regulations.....	11
2.2	Symbols.....	13
3	Using the excavator blade	14
3.1	Assembly.....	14
3.2	Before starting up, connection to tractor	14
3.3	Adjustments.....	15
3.4	Driving with the excavator blade.....	18
4	Service and maintenance	19
4.1	General.....	19
4.2	Maintenance schedule	20
4.3	Before season begins.....	20
4.4	After end of season	20
5	Spare parts.....	21
5.1	Spare parts list TR250SH1	22
	Blade and frame TR250 SH1 Table A.....	23
	Towing attachment TR250 SH1 Table B.....	25
	Hydraulics TR250 SH1 Table C	27
	Supporting wheels TR250 SH1 Table D	29
5.2	Spare parts list TR300SH1	30
	Blade and frame TR300 SH1 Table A.....	31
	Towing attachmentTR300 SH1 Table B.....	33
	Hydraulics TR300 SH1 Table C	35
	Supporting wheels TR300 SH1 Table D	37
	EG-Declaration of Conformity	38

1 Introduction

1.1 OPTIMAL Excavator blade

Thank you for choosing this OPTIMAL excavator blade. We have concentrated our efforts in order to develop a powerful equipment that will operate for many years. However, the working life of the equipment does not only depend on us but also on you. We have compiled this instruction manual in order to facilitate the use of the equipment and describe proper maintenance procedures. Read these instructions carefully. Contact the retailer from whom you purchased the equipment whenever you want to order repair parts or need any other assistance. When you are ordering spare parts, make sure you know the model, type and serial number of the machine. See the plate on the chassis.

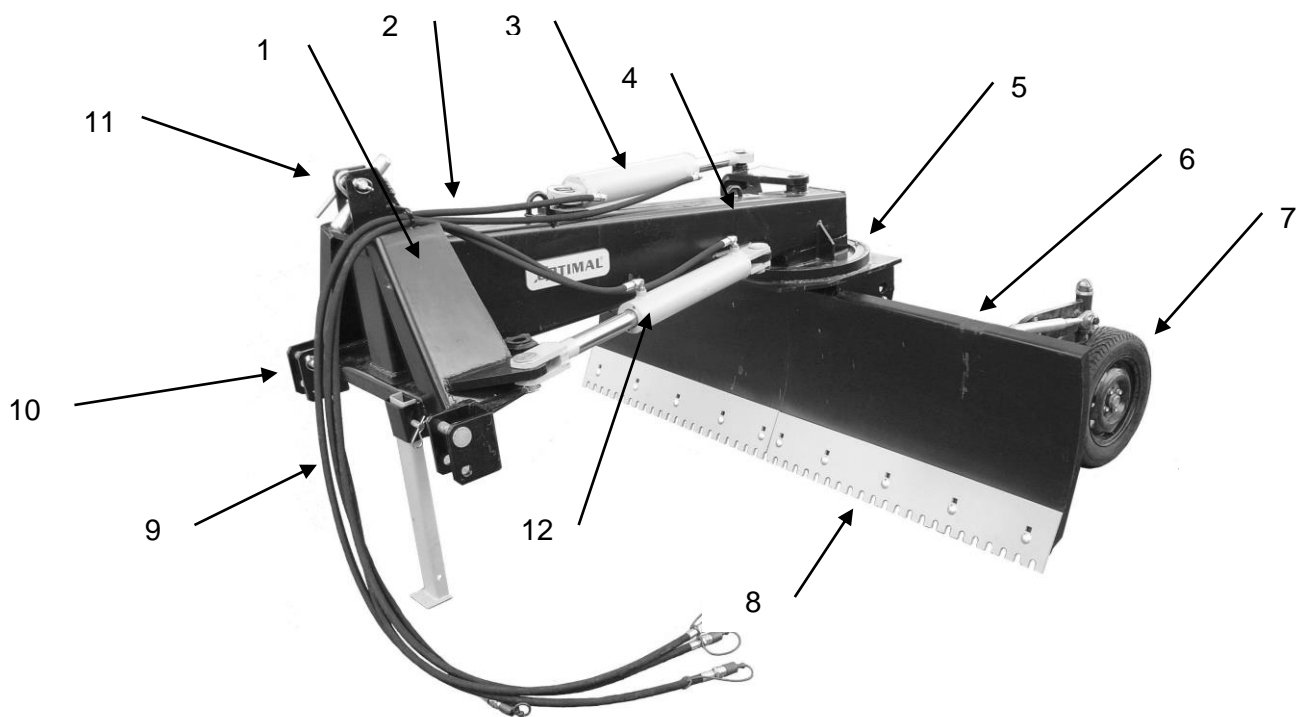
1.2 Description

The equipment is designed to clear snow from level ground such as roads and parking lots. The equipment can also be used for ground levelling. The excavator blade can be turned around and be used either towed or to a reversing tractor. The frame of the equipment can be pivoted since the three-point linkage is pivoted and has a mechanical locking. The cutting angle can be changed mechanically.

The excavator blade is attached to the three point hitch on middle sized tractors. If the equipment is fitted with the hydraulic turning of the blade and frame two double acting hydraulic connections are required on the tractor. The working height can be changed by altering the position of the supporting wheels.

1.3 Detailed description

1	Cat. II three point hitch .
2	Locking pin for turning the frame
3	Hydraulic cylinder for turning the blade
4	Frame
5	Mechanical lock for adjusting the cutting angle
6	Excavator Blade
7	Supporting wheels
8	Reversible wearing edge
9	Support leg
10	Lifter bracket
11	Top link bracket
12	Hydraulic cylinder for turning the frame



1.4 Technical data

Specifications / Version	TR-250SH1	TR-300SH1
Hight blade, mm	700	700
Width, mm	2500	3000
Frame turning, standard type	Hydraulic	Hydraulic
Blade turning, standard type	Hydraulic	Hydraulic
Adjustment of cutting angle, standard Type	Mechanical	Mechanical
Supporting wheels	Standard	Standard
Weight, basic unit (kg)	580	700
Means of attachment to tractor	Three point hitch Cat II	Three point hitch Cat II

Due to continuous product development, any data is subject to change without prior notice.

2 Safety instructions

2.1 Safety regulations



Carefully read this operation manual and the safety regulations och before your start using the equipment.

If the user has not read or does not comply with the following information there is a large risk of personal injuries and material damage. The machine is intended only for outdoor use.

- Read and understand the complete content of this manual about how to use the equipment.
- Learn how the equipment operates and how to use the controls properly before operating the equipment.
- Check, adjust and maintain the equipment according to the manual.
- Apply hand brake and place the equipment on a hard level surface when maintaining or adjusting it.
- Make sure that no one is in the working area of the equipment.
- The tractor engine must always be turned off before performing any kind of cleaning och checking. The tractor parking brake must be tightened and the equipment must be placed on the ground.
- Keep arms and legs away from moving parts.
- Make sure to have sufficient lights providing great visibility over the working area during work under dark conditions.
- Always stop the tractor and set the parking brake during cleaning, adjustment, maintaining and/or repairing the equipment.
- Make sure that no unauthorised person especially children do not enter the working area.
- Connect the equipment correctly; do not stand behind the tractor during coupling.
- Be careful when lifting or lowering the equipment.
- If the equipment had been lifted up for cleaning, adjustment, inspection or repairing, it is necessary to secure it from falling/drop down. Place mechanical supports under the equipment to keep it from falling/dropping down.
- The equipment must not be mounted on a tractor with insufficient front shaft weight, causing the tractor to be unstable and difficult to operate. The weight may be attained with a front end loader, front wheel weights, ballast in tires or front tractor weights, read the tractor's instructions manual for more information.
- The machine's hydraulic hoses contain oil under high pressure. Never touch the hoses or other hydraulic components while there is still pressure in the system. In case of leakage, oil under high pressure can penetrate the skin and cause serious injuries.

- Check the condition of the hydraulic hoses every day. Worn or leaking hoses must immediately be replaced with new hoses that comply with the technical requirements of the manufacturer.
- When changing tractor, always check the length of the hydraulic hoses, too long or too short hoses can be damaged.

Also pay attention to:

- Unauthorized persons, particularly children, are not allowed near the machine while it is running or is being repaired.
- It is prohibited for drunk persons to work with the equipment.
- Only properly trained people with driver's license is allowed to operate this equipment.
- It is prohibited to adjust the equipment och removing material from the blade while the tractor engine is running.
- Be careful when working on uneven ground, adjust the working speed.
- Clean the equipment thoroughly before repairs or storage.
- Protect bearings and hydraulic components before you start any welding work.
- Make sure that no one is in the working area if the equipment.

Only use original spare parts for the equipment.

If you have any questions about the equipment or its function, please contact your retailer or TREJON AB

2.2 Symbols

The symbol to the right shows:



Warning!
Sticker 1: Read the operator's manual carefully before use, to make sure you are familiar with the equipment.



Warning!
Sticker 2: Keep arms and legs away from moving parts.



Warning!
Sticker 3: Crushing hazard. When coupling, never stand between the tractor and the equipment as long as the tractor is moving. The tractor must be immobilized with the parking brake whenever the operator leaves the cabin.



Sticker 4: The CE symbol mounted by the manufacturer confirms that the complete equipment meets all requirements concerning machinery directives and other corresponding EG directives. The equipment serial number and model is stamped on the identifying plate.

		TREJON AB Företagsvägen 9 SE- 911 35 VÄNNÄSBY SWEDEN www.trejon.se		
		Model	<input type="text"/>	
Serial No.	<input type="text"/>	Prod. Year	<input type="text" value="20"/>	
Weight	<input type="text"/> kg	Total Weight	<input type="text"/> kg	

3 Using the excavator blade

3.1 Assembly



Always use secure lifting equipment during assembly since some parts of the blade are too heavy to lift manually.

The excavator blade is delivered packed in a wooden ratchet.

Use undamaged and suitable tools and safe lifting straps.

Assemble the excavator blade, see the drawing in the spare parts list at the end of this manual for correct assembly.

Check that all screws and bolts are properly tightened after the assembly.

3.2 Before starting up, connection to tractor



BEFORE CONNECTING THE EXCAVATOR BLADE TO THE TRACTOR, make sure that:

- The tractor parking brake is tightened
- No one is between the tractor and the excavator blade

WHEN CONNECTING THE EXCAVATOR BLADE TO THE TRACTOR, make sure that:



- That the hydraulic hoses are connected in the right direction. Make sure not to spill hydraulic oil on your hands.
- Do not stand between the tractor and the excavator blade when you are using the lift. Make sure that the supporting leg is locked in the upper position before you drive off.
- Do not stand or walk under lifted excavator blade.
- Check that all cotters and locking pins are correctly attached to the equipment.

Check that the dimensions of the excavator blade matches your tractor concerning power and weight. The blade is suitable for middle sized tractors.

- Attach the excavator blade to the three point hitch on the tractor by reversing the hydraulic arms of the tractor in between the brackets on the excavator blade in order to fit the draw rods.
- Apply the tractor parking brake.
- Mount the tractor lifting jibs and push rod to the machine and lock them with locking pins.
- Lift the excavator blade a bit from the ground.
- Lift the support leg and lock it in the upper position.
- Check that the hydraulic arms side limiter are locked, adjust them if needed.
- Adjust the blade and the main beam to the desired working angle and lock the settings with locking pins.

- Connect the hydraulic hoses of the excavator blade.
- Remove any dirt that might remain from the transport from the cylinder rods (chrome parts) and apply a thin layer of motor oil.
- Check the hydraulic functions and make sure that the cylinder is driven in the desired direction (mark up hoses and couplings if needed).
- Lift the excavator blade with the lifting arms to the top position and check that the tractor push rod is not so high up that it hits the cabin.
- Adjust the height of the wearing edge height with the supporting wheels and the height of the lifting arms from the ground Change the push rod length if needed.

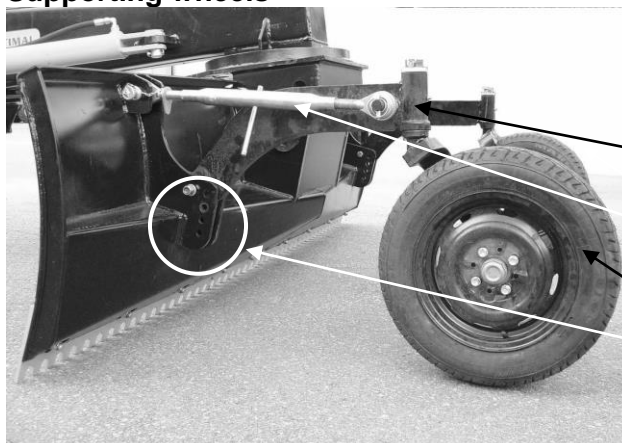
3.3 Adjustments

Working depth

The working depth of the equipment can be adjusted on its back side using two adjustable supporting wheels and by setting the height of the three point hitch from the ground. The height of the supporting wheels can be adjusted by turning the push rod to make it longer or shorter. Lock the setting with the screw nut on the push rod. If needed, it is also possible to change the fixation point of the wheel attachment, e.g. if the cutting angle of the blade is change.

To reduce wear of the wearing edge during e.g. snow clearance at the beginning of the winter it is recommended to adjust the edge 1-2 cm above the ground. Later, the height can be adjusted to allow the equipment to scrape as much as required.

Supporting wheels



Adjust the height of the supporting wheels by turning the push rod to make it longer or shorter.

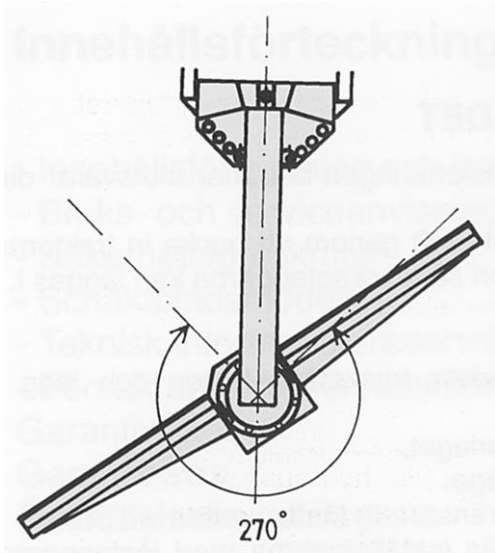
Wheel attachment

Push rod

Wheel

Alternative fixation holes for wheel attachment

Setting the blade working angle



Hydraulic models:

Turn the blade from towed to reversing position by pushing the cylinder to its outermost position and shift with the cylinder in that position the hydraulic direction so that the blade turns around to the reversing position. **Be extremely careful with the hydraulics when the slewing ram is in its dead position.**

In some cases it might be necessary to turn with the tractor and drive at the same time. Pull in the cylinder when the blade passes the centre.

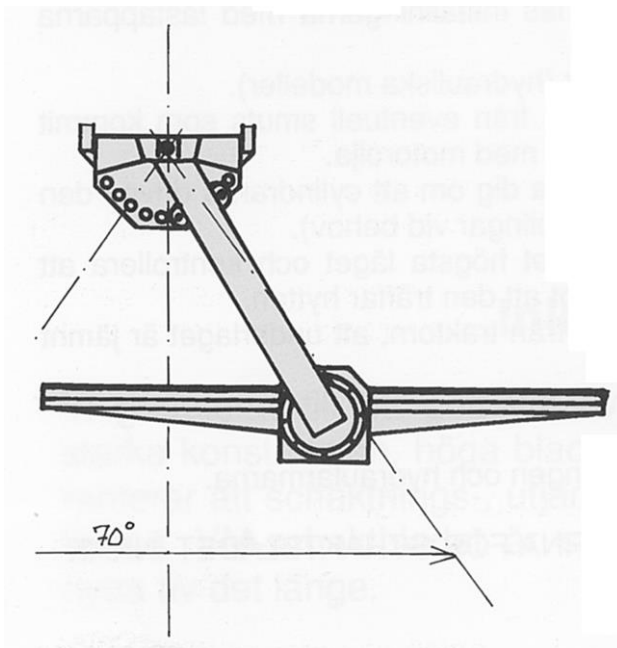
The blade angle can be adjusted infinitely variable according to the drawing.



Warning!

Be extremely careful with the hydraulics when the slewing ram is in its dead position.

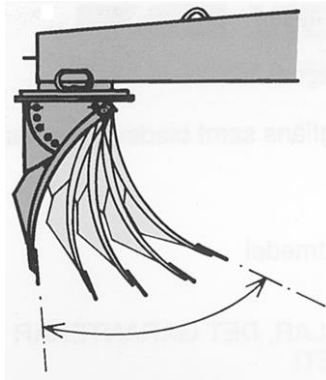
Setting the main frame angle



Hydraulic models:

The angle can be adjusted infinitely variable according to the drawing.

Setting the cutter angle



The cutter angle can be set to 5 different positions.

It is locked with a locking pin.

To set the angle:

- Lift the blade approx. 0,5m from the ground.
- Remove the locking pin and the stud.
- Choose the setting most appropriate for the work in question.
- Reassemble the stud and the locking pin.

Wearing edge



The wearing edge has a jagged and an even side.

The jagged wearing edge is suitable for scraping softer material like ice and hard packed snow.

The even side can be used for most types of work. The even side provides a longer service life than the jagged one when working on hard ground.

Unscrew the screws that are holding the edge and turn it according to your requirements. The edge has two hole patterns. Move to the upper holes on the respective side before turning the edge around.



Warning!

At any time when performing repairs and maintenance, the equipment must be lowered down and the tractor engine turned off. Withdraw the ignition key from the switch.

3.4 Driving with the excavator blade

WORKING WITH THE EXCAVATOR BLADE:



- Comply with traffic laws and regulations when driving on public roads.
- Make sure that no unauthorised persons are in the immediate vicinity of the excavator blade.
- When driving the tractor pay attention to that the excavator blade describe a curve that is considerably different to the path of the tractor.
- There is a risk of sudden jerks of the excavator blade and the tractor suddenly come to a stop at an obstacle. Adjust the tractor speed in order not to endanger yourself, the tractor, the excavator blade or other traffic.
- When excavating to the side, pay attention to that a possible obstacle or the soil or the snow being excavated can turn the tractor to the side.

The equipment is designed to clear snow from level ground such as roads and parking lots. The equipment can also be used for lighter ground levelling and excavation work.

Adjust and set the blade to suit the work in question. Adjust the speed to the ground and to the type of work you are doing. Pay attention and make sure that the blade does not get stuck on stones or similar objects. Always lift up the blade from the ground before you change the driving direction of the tractor.



NB! A doubled driving speed, make the stress at the equipment four times higher. Do not drive faster than absolutely necessary. Damages on the excavator blade caused by impact with heavy, solid objects isn't covered by the warranty.

When clearing great masses of material you should work yourself through in several runs.

4 Service and maintenance



Warning!

When performing any form of maintenance, repairs or service, the equipment must be lowered to the ground and the motor of the tractor must be switched off. Withdraw the ignition key from the switch.

No work is allowed unless the equipment is safely secured. Always use protective equipment such as goggles and gloves when carrying out maintenance.

Do not use your fingers when examining small openings. This is to avoid accidents.

To avoid injury to other persons, make sure that nobody is in the proximity.

4.1 General

Always use high quality lubricants. All kind of work that has to be done under an elevated equipment must only be performed if the machine has been carefully secured. Only use suitable tools. Keep the equipment clean under the chassis to obtain good function and prevent corrosion. After cleaning with water the equipment must be lubricated.

Use the table below for the correct torque settings for the screws and bolts of the equipment.

Table 1 - Torque settings

Diameter	Class 8.8		Class 10.9	
	Nm	lb.ft.	Nm	lb.ft.
M8	25	18	35	26
M10	50	37	70	52
M12	90	66	125	92
M14	140	103	200	148
M16	215	155	305	225
M18	295	217	420	309
M20	420	302	590	438

When a locking nut is used, increase torque by 5%.

4.2 Maintenance schedule

Position	Interval	*Action	Lubricant	Note
Swing plate, blade	8 h	L	Grease NLGI 2	
Turning cylinder	8 h	L	Grease NLGI 2	
Attachment supporting wheels	8 h	L	Grease NLGI 2	
Wearing edge	8 h	C/R/A	-	Change wearing edge before the blade wear against the ground.
All screws and bolts	40 h	C/A	-	See Table 1 p. 20
Other movable joints	40 h	L/C/A	Engine oil 10W30	
Tyre pressure, supporting wheels	40 h	C/A	-	2-2.2 Bar

* Action codes: A= Adjustment, C= Control, Cl. = Cleaning, R=Replace

When lubricating, use NLGI 2 grease with high quality EP characteristics. These intervals are to be used for normal usage, when operating continuously, lubricate more often. Always lubricate after cleaning with water.

4.3 Before season begins

All the above points must be performed. Equipment well serviced lasts longer.

4.4 After end of season

Clean the equipment thoroughly before it is lubricated and maintained. When the equipment is dry, we suggest that you cover the parts where the material has worn off the paint with a thin coating of oil.

5 Spare parts

Your choice is “original” or “copies”!

Price is often the deciding factor. A “cheap” choice may well turn out to be an expensive one in the end.

Some reasons to choose TREJON spare parts:

- Quality and fitting
- Reliability
- Longer service life and therefore better economics
- Guaranteed availability through the TREJON sales partners

The TREJON original spare parts are specifically made for this equipment. The fitting and/or use of non-original parts and accessories may change the technical qualities of your equipment in a negative way. The manufacturer does not give any guarantee for damages caused by using non-original parts or accessories.

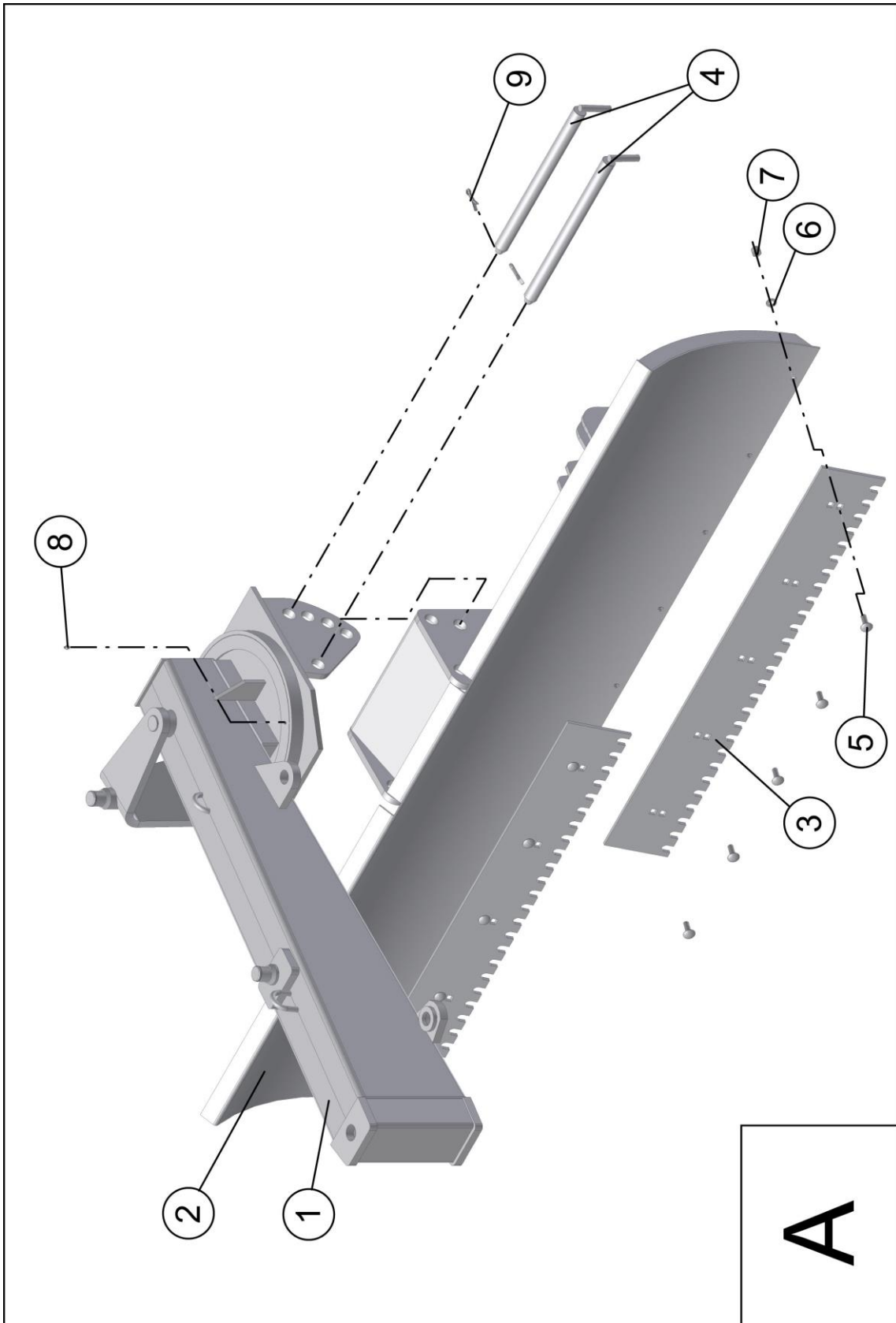
The guarantee does not cover arbitrary changes made on the equipment.



Contact the authorised dealer where you purchased the machine when you want to order repair parts or need other assistance.

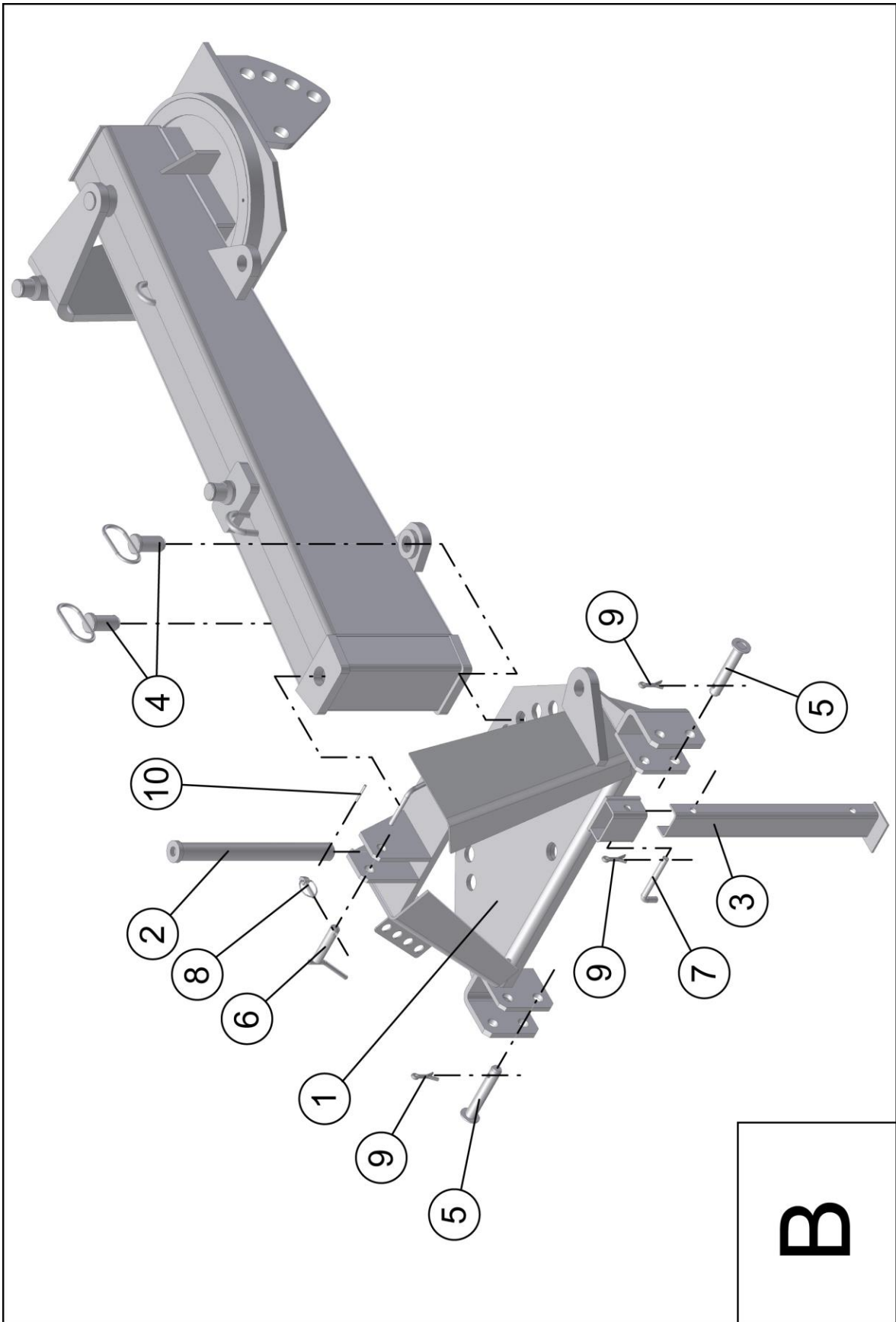
When you are ordering spare parts, make sure you know the model, type and serial number of the machine. See the plate on the chassis.

5.1 Spare parts list TR250SH1



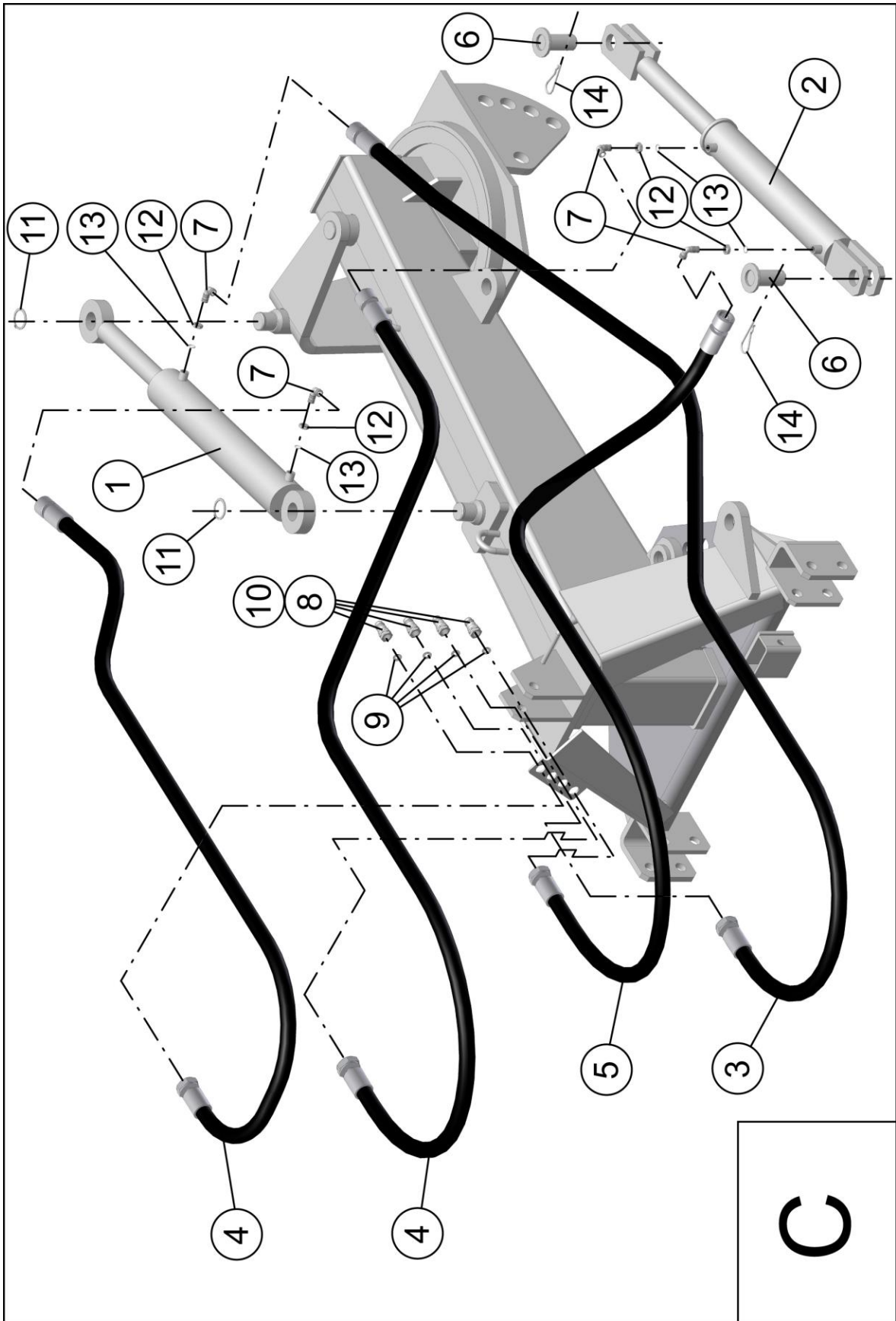
Blade and frame TR250 SH1 Table A

Pos. No	Name	KTM number	Item number	Number
1	Beam		T4292-001	1
2	Excavator Blade		T4292-002	1
3	Wearing edge, plain/plain (hole scraper)		T4292-003	2
	Wearing edge, toothed/plain (hole scraper)		T4292-004	2
	Wearing edge, toothed/toothed (hole scraper)		T4292-005	2
4	Pin		T4292-006	2
5	Screw M16x45-5.8	PN-87/M-82406	PN-87/M-82406	8
6	Washer 17	PN-78/M-82005	PN-78/M-82005	8
7	Screw nut M16	PN-85/M-82175	PN-85/M-82175	8
8	Lubricant nipple M10x1	PN-79/M-82002	PN-79/M-82002	2
9	Cutter A11x45-Fe/Zn	BN-81/1902-31	BN-81/1902-31	2



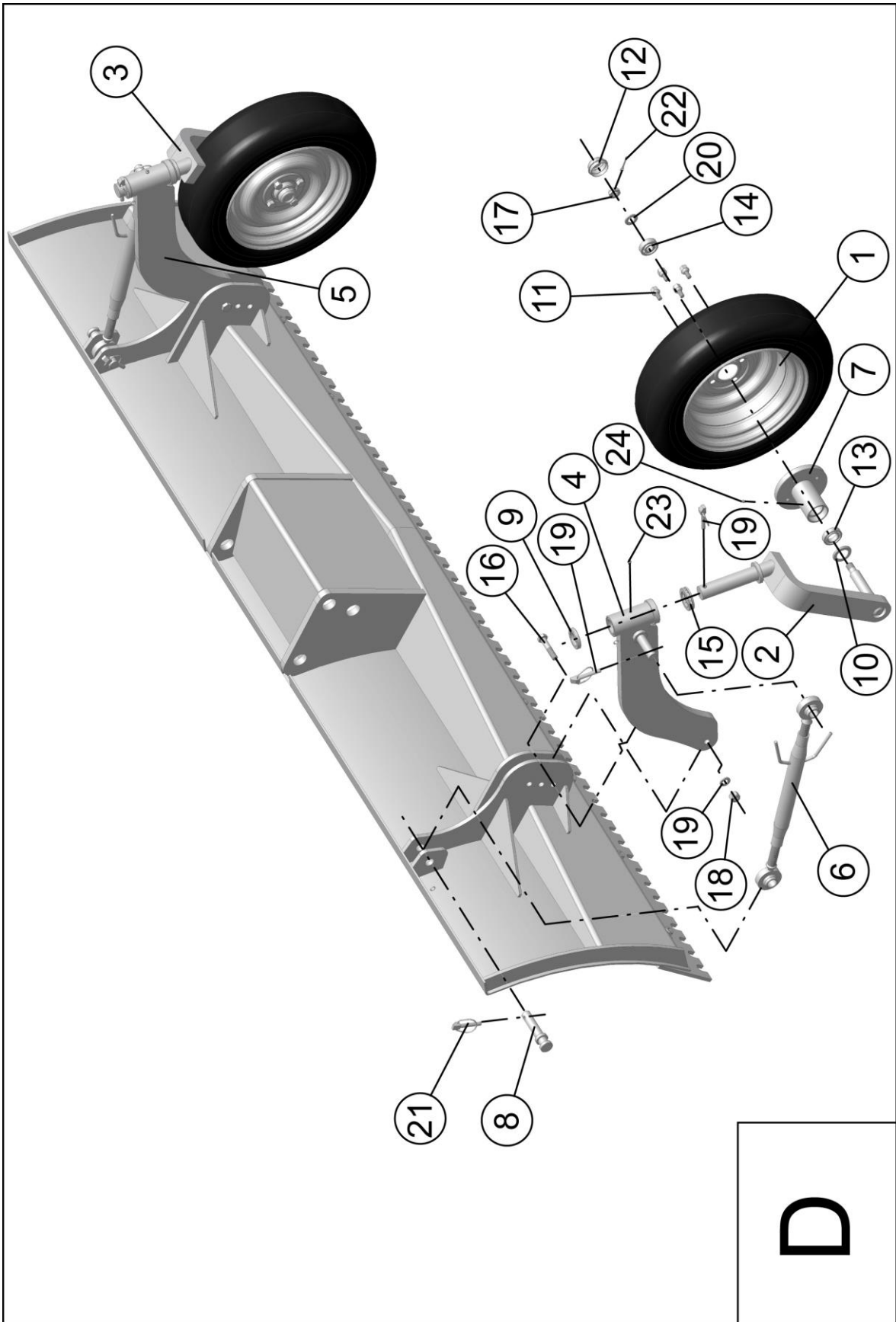
Towing attachment TR250 SH1 Table B

Pos. No	Name	KTM number	Item number	Number
1	Three-point linkage		T4292-012	1
2	Axis		T4292-013	1
3	Support legs		T4292-014	1
4	Pin		T4292-015	2
5	Pin		T4292-016	2
6	Pin III		T4292-017	1
7	Cutter		T4292-018	1
8	Ring pin A11x45-Fe/Zn	BN-81/1902-31	BN-81/1902-31	1
9	Cutter A71-Fe/Zn5	BN-81/1902-04	BN-81/1902-04	3
10	Locking pin 6x55-Fe/Zn	PN-89/M-85023	PN-89/M-85023	1



Hydraulics TR250 SH1 Table C

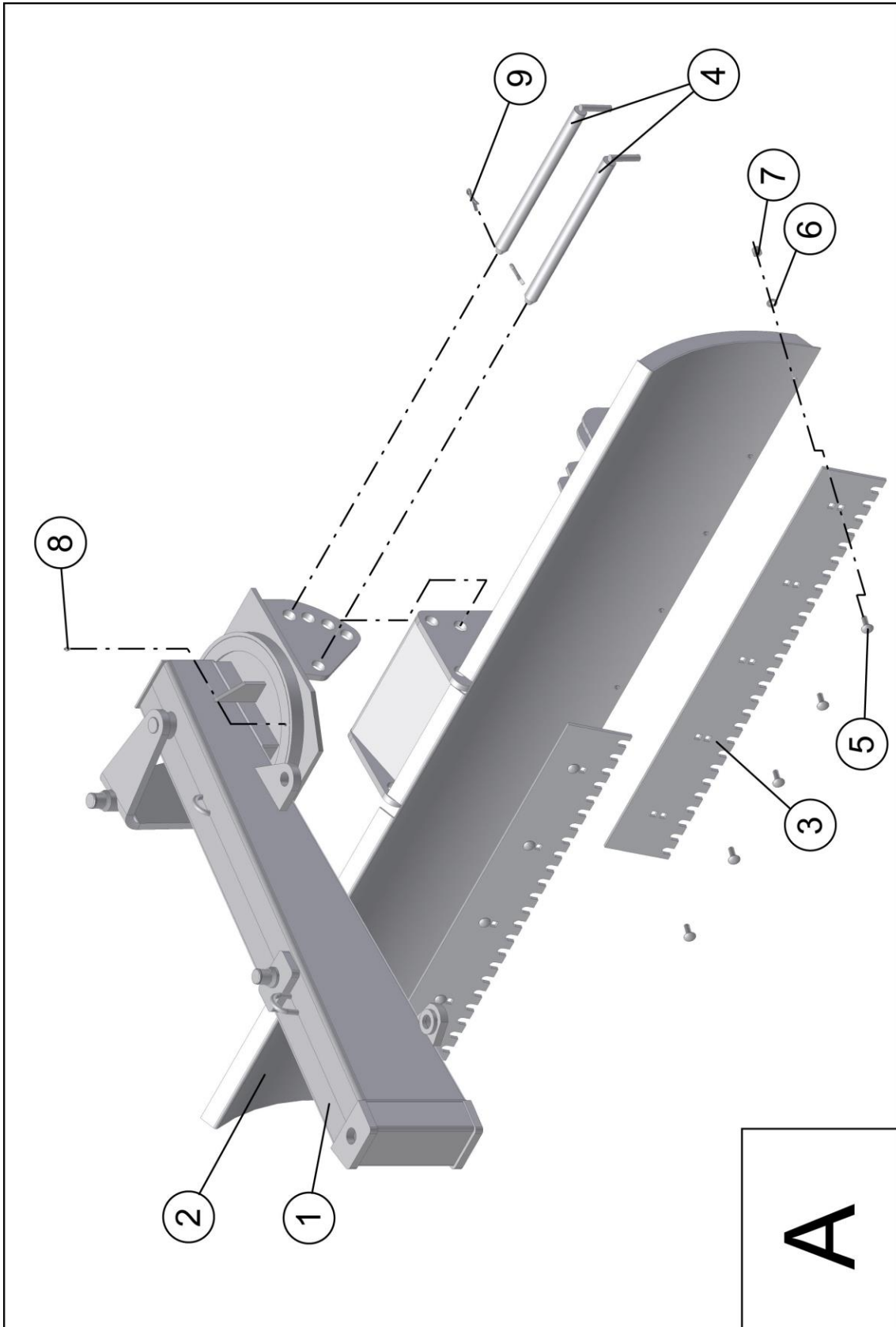
Pos. No	Name	KTM number	Item number	Number
1	Hydraulic cylinder 90/50/500		T4292-022	1
2	Hydraulic cylinder 80/50/450		T4292-023	1
3	Hydraulic hose I		T4292-024	1
4	Hydraulic hose II		T4292-025	2
5	Hydraulic hose III		T4292-026	1
6	Pin II		T4292-027	2
7	Angle 16-10	PN-65/M-73142	PN-65/M-73142	4
8	Hydraulic quick-coupling EURO	NV 12 GASM	T4292-029	4
9	Sealing washer Cu 21x27,5x1,5	DIN 3852	DIN 3852	4
10	Dust cover	SPAV.13003 (DN13)	T4292-031	4
11	Washer Z44,5 (45)	PN-81/M-85111	PN-81/M-85111	2
12	Screw nut M16x1,5	PN-65/M-73109	PN-65/M-73109	4
13	Washer 13,3x2,4	PN-60/M-86961	PN-60/M-86961	4
14	R-pin A85-Fe/Zn5	BN-81/1902-04	BN-81/1902-04	2



Supporting wheels TR250 SH1 Table D

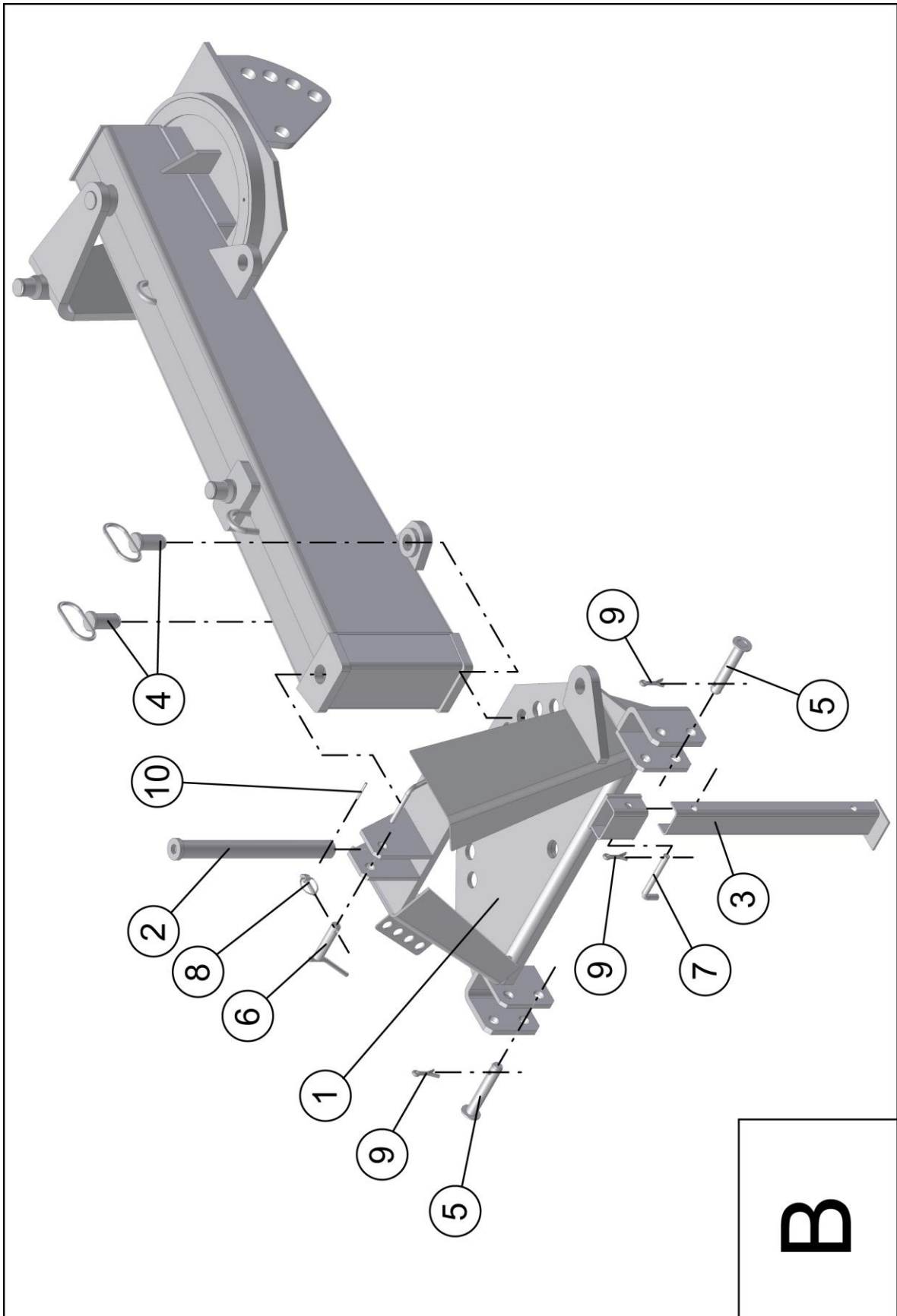
Pos. No	Name	KTM number	Item number	Number
1	Wheel complete (165/65 R13)		T4292-036	2
2	Fork left		T4292-037	1
3	Fork right		T4292-038	1
4	Arm left		T4292-039	1
5	Arm right		T4292-040	1
6	Adjustment rod		T4292-041	2
7	Hub		T4292-042	2
8	Pin		T4292-043	2
9	Washer		T4292-044	2
10	Washer		T4292-045	2
11	Screw		T4292-046	8
12	Hub cover		T4292-047	2
13	Bearing 6006Z	PN-79/M-86100	PN-79/M-86100	2
14	Bearing 6304Z	PN-79/M-86100	PN-79/M-86100	2
15	Bearing 51108	PN-86/M-86260	PN-86/M-86260	2
16	Screw M16x75-8.8-Fe/Zn5	PN-85/M-82175	PN-85/M-82175	2
17	Screw nut M20x1,5 K-Fe/Zn5	PN-86/M-82159	PN-86/M-82159	2
18	Screw nut M16	PN-85/M-82175	PN-85/M-82175	2
19	Washer 17	PN-78/M-82005	PN-78/M-82005	2
20	Washer 21	PN-78/M-82005	PN-78/M-82005	2
21	Ring pin A11x65	BN-81/1902-31	BN-81/1902-31	6
22	Peg S-Zn 4x40	PN-76/M-82001	PN-76/M-82001	2
23	Lubricant nipple M8x1/H	PN-76/M-86002	PN-76/M-86002	2
24	Lubricant nipple M6x1/45H	PN-76/M-86002	PN-76/M-86002	2

5.2 Spare parts list TR300SH1



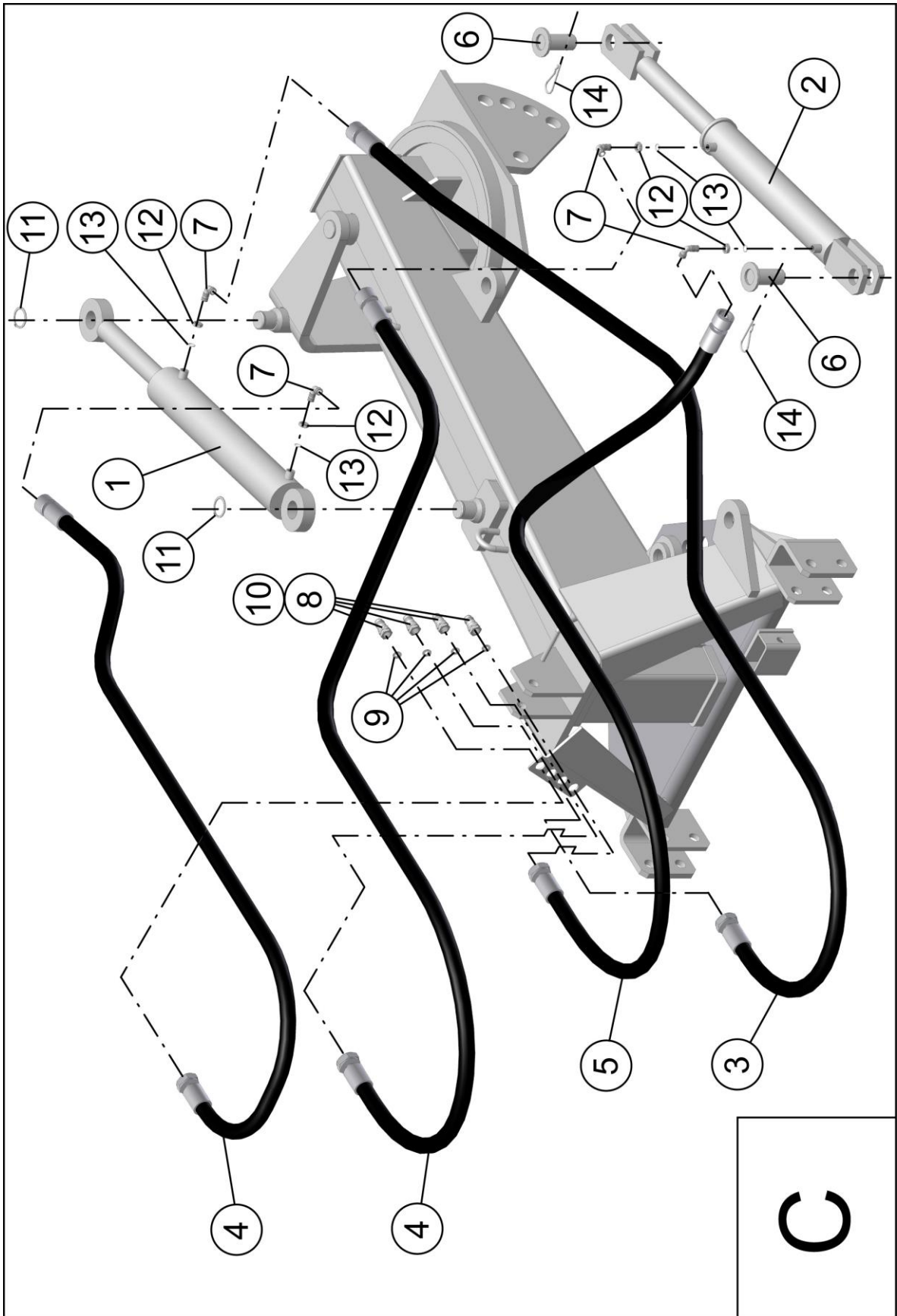
Blade and frame TR300 SH1 Table A

Pos. No	Name	KTM number	Item number	Number
1	Beam		T4292-001	1
2	Excavator Blade		T4293-002	1
3	Wearing edge, plain/plain (hole scraper)		T4293-003	2
	Wearing edge, toothed/plain (hole scraper)		T4293-004	2
	Wearing edge, toothed/toothed (hole scraper)		T4293-005	2
4	Pin		T4292-006	2
5	Screw M16x45-5.8	PN-87/M-82406	PN-87/M-82406	10
6	Washer 17	PN-78/M-82005	PN-78/M-82005	10
7	Screw nut M16	PN-85/M-82175	PN-85/M-82175	10
8	Lubricant nipple M10x1	PN-79/M-82002	PN-79/M-82002	2
9	Cutter A11x45-Fe/Zn	BN-81/1902-31	BN-81/1902-31	2



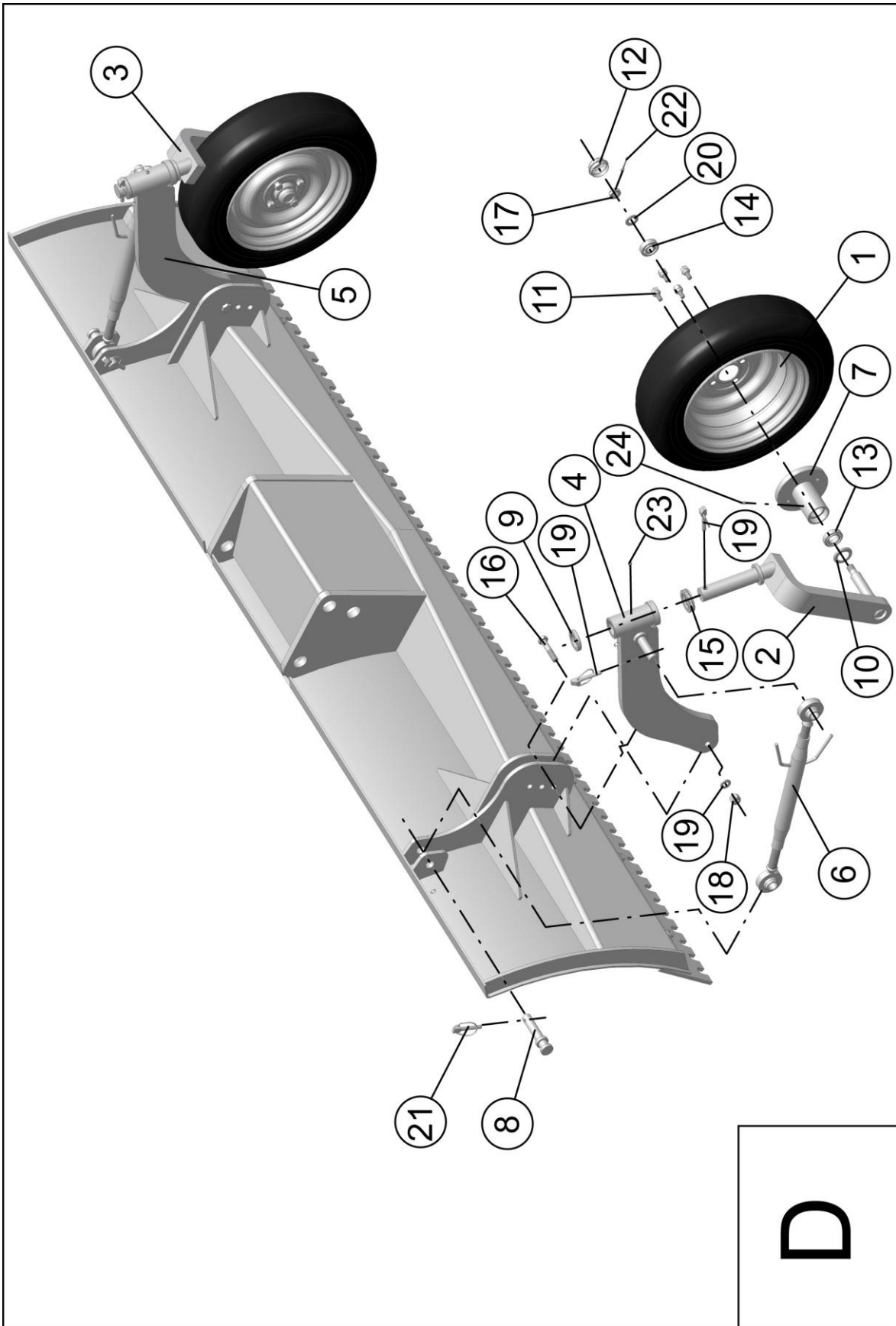
Towing attachment TR300 SH1 Table B

Pos. No	Name	KTM number	Item number	Number
1	Three-point linkage		T4292-012	1
2	Axis		T4292-013	1
3	Support legs		T4292-014	1
4	Pin		T4292-015	2
5	Pin		T4292-016	2
6	Pin III		T4292-017	1
7	Cutter		T4292-018	1
8	Ring pin A11x45-Fe/Zn	BN-81/1902-31	BN-81/1902-31	1
9	Cutter A71-Fe/Zn5	BN-81/1902-04	BN-81/1902-04	3
10	Locking pin 6x55-Fe/Zn	PN-89/M-85023	PN-89/M-85023	1



Hydraulics TR300 SH1 Table C

Pos. No	Name	KTM number	Item number	Number
1	Hydraulic cylinder 90/50/500		T4292-022	1
2	Hydraulic cylinder 80/50/450		T4292-023	1
3	Hydraulic hose I		T4292-024	1
4	Hydraulic hose II		T4292-025	2
5	Hydraulic hose III		T4292-026	1
6	Pin II		T4292-027	2
7	Angle 16-10	PN-65/M-73142	PN-65/M-73142	4
8	Hydraulic quick-coupling EURO	NV 12 GASM	T4292-029	4
9	Sealing washer Cu 21x27,5x1,5	DIN 3852	DIN 3852	4
10	Dust cover	SPAV.13003 (DN13)	T4292-031	4
11	Washer Z44,5 (45)	PN-81/M-85111	PN-81/M-85111	2
12	Screw nut M16x1,5	PN-65/M-73109	PN-65/M-73109	4
13	Washer 13,3x2,4	PN-60/M-86961	PN-60/M-86961	4
14	R-pin A85-Fe/Zn5	BN-81/1902-04	BN-81/1902-04	2



Supporting wheels TR300 SH1 Table D

Pos. No	Name	KTM number	Item number	Number
1	Wheel complete (165/65 R13)		T4292-036	2
2	Fork left		T4292-037	1
3	Fork right		T4292-038	1
4	Arm left		T4292-039	1
5	Arm right		T4292-040	1
6	Adjustment rod		T4292-041	2
7	Hub		T4292-042	2
8	Pin		T4292-043	2
9	Washer		T4292-044	2
10	Washer		T4292-045	2
11	Screw		T4292-046	8
12	Hub cover		T4292-047	2
13	Bearing 6006Z	PN-79/M-86100	PN-79/M-86100	2
14	Bearing 6304Z	PN-79/M-86100	PN-79/M-86100	2
15	Bearing 51108	PN-86/M-86260	PN-86/M-86260	2
16	Screw M16x75-8.8-Fe/Zn5	PN-85/M-82175	PN-85/M-82175	2
17	Screw nut M20x1,5 K-Fe/Zn5	PN-86/M-82159	PN-86/M-82159	2
18	Screw nut M16	PN-85/M-82175	PN-85/M-82175	2
19	Washer 17	PN-78/M-82005	PN-78/M-82005	2
20	Washer 21	PN-78/M-82005	PN-78/M-82005	2
21	Ring pin A11x65	BN-81/1902-31	BN-81/1902-31	6
22	Peg S-Zn 4x40	PN-76/M-82001	PN-76/M-82001	2
23	Lubricant nipple M8x1/H	PN-76/M-86002	PN-76/M-86002	2
24	Lubricant nipple M6x1/45H	PN-76/M-86002	PN-76/M-86002	2



EG-Declaration of Conformity

Conforming to EEC Directive 2006/42/EG

We **TREJON FÖRSÄLJNING AB**
 (Name of supplier).....

SE – 911 35 Vännäsby, Företagsvägen 9

 (Full address of company – where this concerns authorized agents within the Common Market, also state the company name and manufacturer)

declare in sole responsibility, that the product

Excavator blade OPTIMAL TR-250SH1
Excavator blade OPTIMAL TR-300SH1

 (make, model)

to which this certificate applies, conforms to the basic safety and health requirements of EEC Directive 2006/42/EG,
 (If applicable)
 and to the other relevant EEC Directives.

— — —

 (Title and/or number and date of issue of the other EEC Directives)

(If applicable)

To effect correct application of the safety and health requirements stated in the EEC Directive, the following standards and/or technical specifications were consulted:

EN ISO 12100-1: 2010 EN ISO 12100-2 : 2010

 (Title and/or number and date of issue of standards and/or specifications)



Vännäsby, 01.01.2008

 (Place and date of issue)

Håkan Johansson
Managing Director

 (Name and job function of authorized person)

Guarantee- /assignment certificate

- Guarantee terms** - Valid between retailer (Trejon AB dealer) and machine purchaser.
- General about guarantee** - In order to obtain valid guarantee terms set forth below, and the specific guarantee terms set by each provider. These are attached to the user manual for each machine, as appropriate.
- Validity of guarantee** - The guarantee is 12 months from date of purchase.
In some cases, the guarantee can be limited by running time.
- The guarantee covers** - Damaged parts, which have broken down because of defective production operations of materials in course of normal use of the machine.
- Only the labor cost for replacement of defective warranted part.
- The guarantee does not cover** - Transport costs applicable to the machine or the parts.
- Travel costs.
- Any resulting costs incurred as a result of damage to the machine.
- If the machine has been modified by the owner.
- Damage due to normal wear and tear of the machine – Not related to manufacturing defects, poor service, user inexperience or use of spare parts that are not original.
- Excessive or inappropriate use of the machine.
- The guarantee is not applicable to parts which are subject to wear, for example hoses, sealing, oil, belts, batteries, chains, knives etc.
- The guarantee period for replaced parts during the guarantee period expires with the machine's guarantee.
- Normal adjustments, maintenance or supervision
- Guarantee procedures** - Contact place of purchase as soon as any damage or malfunction is detected.
Do not use the machine if the damage can be worse.
- Guarantee repairs must be performed by Trejon AB approved workshop.

ATTENTION! The guarantee shall enter into force provided that the machine **GUARANTEE/ ASSIGNMENT CERTIFICATE** has been fully completed and signed by both parties (archived by the seller), and recorded on the Trejon web portal no later than 14 days from date of sale (the seller is responsible for this happening).

Assignment certificate:

Machine Buyer shall confirm with his signature that he had received manual containing operating instructions, and received information about the operating, security and maintenance requirements described in this and made the final inspection of the machine.

PLEASE FILL IN!



Product: _____	Serialno. _____
Salesman: _____	Company: _____
Signature of salesman: _____	Date of purchase: _____
Name of buyer: _____	Telephone: _____
E-mail: _____	
Address: _____	Zipcode: _____
City: _____	Country: _____
Date: _____	Signature of buyer: _____

TREJON AB reserves the right to change or to improve shown models using technical or commercial reasons, without demands to carry out the same improvements on equipment already delivered. Pictures in the manual do not necessarily show the equipment as delivered.

Technical data, weights and measures are without obligation. With reservation for mistakes and errors.

© 2018 Trejon AB, Sweden

Copying, translation and excerpts are only allowed with a written permit from TREJON AB, Företagsvägen 9, SE – 911 35 Vännäsby.

All rights reserved.



TREJON FÖRSÄLJNINGS AB

Företagsvägen 9
SE-911 35 VÄNNÄSBY
SWEDEN
Tel: + 46 (0)935 39 900
Webb: trejon.se