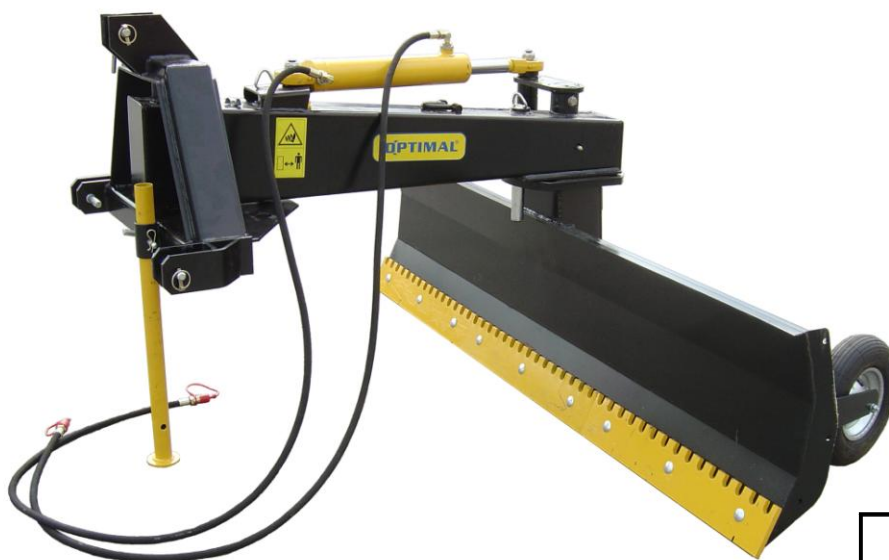




Operating and maintenance manual

Excavator Blade TR-250J



NB! Read the operating manual before use.



TREJON AB
Företagsvägen 9
SE-911 35 VÄNNÄSBY
SWEDEN
Tel: + 46 (0)935 399 00
Fax: + 46 (0)935 399 19



■ TABLE OF CONTENT

1	Introduction	8
1.1	Foreword	8
1.2	Description	8
1.3	Detailed description	9
1.4	Technical data	10
2	Safety instructions	11
2.1	Safety regulations.....	11
2.2	Symbols.....	14
3	Assembly.....	15
4	Using the excavator blade	17
4.1	Before starting up, connection to tractor	17
4.2	Adjustments.....	18
4.3	Driving with the excavator blade.....	21
5	Service and maintenance	22
5.1	General.....	22
5.2	Maintenance schedule	23
5.3	Before season begins.....	23
5.4	After end of season	23
6	Troubleshooting	24
7	Spare parts.....	25
7.1	Use original spare parts.....	25
7.2	Spare parts list	26
7.3	Table A Blade.....	26
7.4	Table B Frame.....	27
7.5	Tabell C Hydraulics	28
7.6	Tabell D Supporting wheels.....	29

EG-Declaration of Conformity31

SAFETY SYMBOLS

NB! This warning symbol is used in this instruction manual to call attention to safety instructions that you, your employees or any other persons that may come in contact with the machine must read and understand. Neglecting these instructions may cause serious injury or even death.

This symbol means:



**WARNING!
CAUTION!
YOUR SAFETY IS
ENDANGERED!**

Words of warning

Pay attention to the words WARNING! and NOTE! (NOTICE!) in safety texts. The words have been chosen according to the following principles:



Warning!:

This sign is used to identify potential hazardous situations that, if not avoided, can lead to serious injury or even death. These include situations that may occur when safety equipment and/or safety shields are removed. The words of warning can also be used to alert about dangerous use.



NB!

Failure to observe this warning could result in light personal injuries. The sign is also used to indicate that disregarding of these instructions may cause damage to the machine.

Dear Customer,

We congratulate you to your choice of a OPTIMAL product that offers quality and performance with reliable service.

By reading the manual and following its recommendations you will ensure a long and effective use of the equipment.

We have produced this manual for you to get a good understanding of machine functions and to know which safety and maintenance instructions to follow when working with it.

If any question should arise when using the machine or when reading this manual, you are welcome to contact us for further information.

TREJON AB
Företagsvägen 9
SE-911 35 Vännäsby
Sweden

Tel: + 46 (0)935 399 00
Fax: + 46 (0)935 399 19
Fax spare parts: +46 (0)935 202 41
Email: info@trejon.se
Website: www.trejonindustries.se

Dear retailer,

In order for the guarantee to be valid and comply with all legal requirements, we ask you to complete the guarantee form together with the customer and register at trejon.se

The guarantee is valid from the day the equipment is handed over to the customer.



Delivery checklist:

Check for transport damages. Inform the transporting company.	
Check the equipment thoroughly and make sure that all packing material has been removed. Dispose packing material in an environment friendly way	
Check that the delivery is complete according to the order/delivery note.	
Check that the machine is lubricated, see section "Service and maintenance".	
Check tyre pressure.	
Check that the wheel nuts are tightened. The operator must retighten the wheel nuts after a few working hours.	
Go through and, with the help of the manual, explain start up, use and maintenance of the equipment and it's accessories to the customer.	
Perform a test run.	
Operating manual handed over to costumer.	
Fill out the guarantee form with the customer and register at trejon.se	

Fill out the serial number of the machine to the right.	S/N:
---	------

1 Introduction

1.1 Foreword

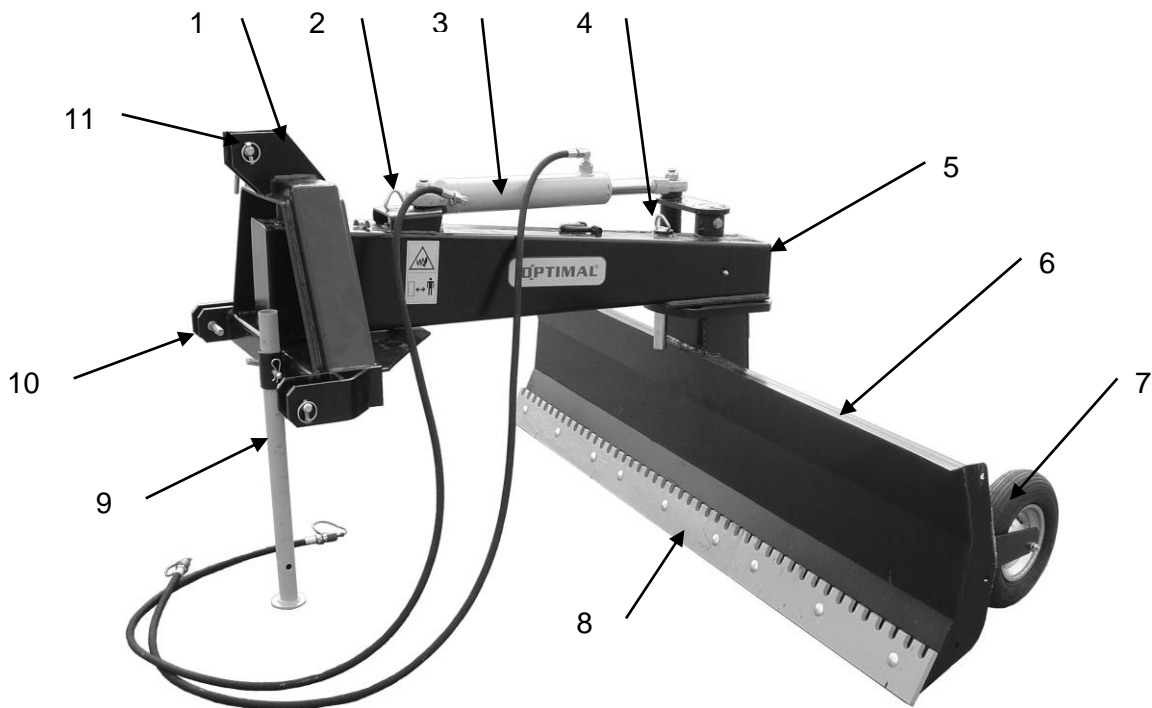
Thank you for choosing this OPTIMAL excavator blade. We have concentrated our efforts in order to develop a powerful machine that will operate for many years. However, the working life of the machine does not only depend on us but also on you. We have compiled this instruction manual in order to facilitate the use of the machine and describe proper maintenance procedures. Read these instructions carefully. Always contact the authorised dealer where you purchased the machine when you wish to order spare parts or need other assistance. Your retailer is your service partner. When you are ordering spare parts, make sure you know the model, type and serial number of the machine. See the plate on the chassis.

1.2 Description

The equipment is designed to clear snow from level ground such as roads and parking lots. The equipment can also be used for ground levelling. The excavator blade can be turned around and be used either towed or to a reversing tractor. The frame of the equipment can be pivoted since the three-point linkage is pivoted and has a mechanical locking. The excavator blade is attached to the Cat. II three point hitch on middle sized tractors. A double acting hydraulic connection is needed for the hydraulic turning of the blade. The working hight can be changed by altering the position of the supporting wheels.

1.3 Detailed description

1	Cat. II three point hitch .
2	Locking pin for turning the frame
3	Hydraulic cylinder for turning the blade
4	Locking pin for turning the (only fitted on blades without hyd. turning)
5	Frame
6	Excavator Blade
7	Supporting wheels
8	Reversible wearing edge
9	Support leg
10	Lifter bracket
11	Tip link bracket



1.4 Technical data

Specifications / Version	TR-250J
Hight blade, mm	600
Width, mm	2500
Frame turning, standard type	Mechanical
Blade turning, standard type	Hydraulic
Supporting wheels	Standard
Weight, basic unit (kg)	450
Means of attachment to tractor	Cat. II three point hitch

Due to continuous product development, any data is subject to change without prior notice.

2 Safety instructions



2.1 Safety regulations

Read operator's manual. All drivers of the machine must read and understand the complete content in this operator's manual, to guarantee there is no doubt concerning operation before using the machine for the first time. If you have any doubts, contact your Trejon dealer for advice.

It is forbidden to use the machine if the user do not know the risk factors during operation, and do not know how to act in an emergency situation.

Read, comply and understand the meaning of all safety-, use-, warning- and position signs on the machine and in the operator's manual.

Situations can occur using this equipment, which can not be prevented by construction or mechanical parts.

Unfortunately, our efforts to provide a safe machine can be ineffective due to human carelessness. Accident prevention are therefore dependent upon the awareness, concern, prudence and proper training of personnel involved in the operation, transport, maintenance and storage of the equipment.

Allow only properly trained personnel to operate the machine.

The machine is intended only for outdoor use.

Operation Learn how the machine operates and how to use the controls properly before operating the machine.

Connecting the machine Connect the machine correctly; do not stand behind the tractor during coupling.

Make sure that the machine is properly mounted, adjusted and in good operating condition.

Secure the working area Unauthorized persons, particularly children, are not allowed near the machine while it is running or is being repaired.

Movable parts of this equipment have been designed and tested for rough use, but the machine can med damaged upon impact with heavy, solid objects like e.g. steel guard rails, concrete abutments or rocks. To reduce the possibility of material damage and personal injuries, make sure never to hit such obstacles.

Protective equipment Do not operate the machine if not all safety guards and shields for moving parts are in place and in good condition.

Make sure that all safety and operating signs are in good condition. If not, replace them immediately.

Additional safety and operating stickers are available at no extra charge. Please specify model and serial number when ordering.

Moving parts Keep hands, feet, hair and clothing away from moving parts. Wear tight clothes when operating the machine.

Let the machine work by it self, don't try to help the machine with hands and fingers.

Lifting and lowering machine.

Be careful when lifting or lowering the machine.

Stability The machine must not be mounted on a tractor with insufficient front shaft /back shaft weight, causing the tractor to be unstable and difficult to operate. In order to guarantee the steering and breaking ability of the traction vehicle, a minimum of 20% of tractor and equipment weight must be on tractor front axle. Without this weight, the tractor could tip over, causing personal injury or death.

The weight may be attained with a front end loader, front wheel weights, and ballast in tires or front tractor weights, read the tractor's instructions manual for more information.

Driving the machine Be careful and reduce the speed when working on uneven surfaces close to ditches and fences, watch out for holes, roots, rocks or other hidden objects. When moving over uneven terrain, observe the type of terrain and develop a safe moving pattern. Be extra careful when driving in slopes:

Operate the machine up and down steep slopes, not across slopes, to prevent the tractor from tipping.

Avoid sudden stops and starts; slow down before changing directions on a slope.

If you have to drive across steep slopes, reduce speed, watch out for uneven surfaces, avoid sharp turns and be aware of the change in centre of gravity when the mounted equipment is lifted.

If tractor overturns, hold tight to steering wheel.

Operating in darkness When working in the dark hours, make sure there is sufficient lighting in the working area.

Driver Do not operate the equipment when you are tired, sick or when using medication.

Do not allow passengers on the machine or on the tractor at any time. There is no safe place for passengers.

Only properly trained people with driver's license is allowed to operate this machine. Do not use the machine if it is vibrating or shaking. Stop and investigate the cause.

Personal protective equipment Personal protection equipment including hard hat, safety glasses, safety shoes and gloves are recommended during assembly, installation, adjustment, maintaining and/or repairing the implement. Keep doors and windows of the tractor cabin closed at dusty conditions.

Safety cabin Operate the machine only with a tractor equipped with an approved Roll-Over-Protective-System (ROPS). Keep doors at tractors cabin closed during operating, serious injury or even death could result from falling off the tractor.

All moving parts, including the engine, must stand still and the parking brake must be tightened before the driver leave the tractor cabin.

Daily maintenance Check, adjust and maintain the machine according to the manual.

Regular servicing Inspect the entire machine periodically. Look for loose fasteners, worn or broken parts, and leaks or loose fittings.

Safety during maintenance and repairing Apply hand brake and place the machine on a hard level surface when maintaining or adjusting it.

Always stop the tractor, set brake, shut off the tractor engine, remove the ignition key, and allow all moving parts on the machine to come to a complete stop before dismounting the tractor.

Clean the machine thoroughly before repairs or storage.

Be sure to thoroughly wash the machine without using excessive pressure, especially on the moving parts, bearings and electric components.

The painting can be damaged if general cleaning is performed with too high pressure.

After cleaning, carefully dry the machine, lubricate it and perform a short test drive.

Vibrations The machine must be stopped immediately if vibrations occur in the machine. Determine the cause of the vibrations. Change any damaged parts.

Emergency stop After hitting an obstacle shut down the machine. Shut of the engine, remove the ignition key, check and repair any damages before resuming the work.

Make sure you know how to stop the tractor and machine quickly in case of an emergency.

Hydraulic hoses. The machine's hydraulic hoses contain oil under high pressure. Never touch the hoses or other hydraulic components while there is still pressure in the system. In case of leakage, oil under high pressure can penetrate the skin and cause serious injuries. In case of an accident, contact a doctor.

Check the condition of the hydraulic hoses every day. Worn or leaking hoses must immediately be replaced with new hoses that comply with the technical requirements of the manufacturer.

When changing tractor, always check the length of the hydraulic hoses, too long or too short hoses can be damaged.

It is forbidden to use hydraulic hoses that do not comply with the specifications of the manufacturer.

Hydraulic engines and hoses can become hot during operation, risk of burn injury. Do not disconnect hoses when the oil is hot, wait for it to cool down.

Welding Protect bearings, electronic and hydraulic components before you start any welding work.

Before conducting any welding work, all electronic components must be disconnected and the ground connection of the weld must be placed close to the welding place.

Risk of fire If any component gets over heated, stop machine and check reason. Crop waste is inflammable. Remove crop waste and dirt containing oil.

There is a risk of fire when working under dry conditions.

It is recommended to keep a fire extinguisher near to the working area.

Smoking is forbidden near the machine.

Spare parts Only use original spare parts

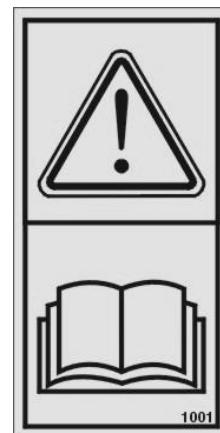
If you have any questions about the machine or its function, please contact your retailer or Trejon AB.

2.2 Symbols

The symbol to the right shows:



Warning!
Sticker 1: Read the operator's manual carefully before use to make sure you are familiar with the equipment.



Warning!
Sticker 2: Keep arms and legs away from moving parts.



Warning!
Sticker 3: Crushing hazard. When coupling, never stand between the tractor and the equipment as long as the tractor is moving. The tractor must be immobilized with the parking brake whenever the operator leaves the cabin.



Sticker 4: The CE symbol mounted by the manufacturer confirms that the complete equipment meets all requirements concerning machinery directives and other corresponding EG directives. The equipment serial number and model is stamped on the identifying plate.

	TREJON AB Företagsvägen 9 SE- 911 35 VÄNNÄSBY, SWEDEN Tel. +46935-399 00 Fax +46935-399 19 www.trejon.se		
	Serial nr. <input type="text"/>	Model <input type="text"/>	
Ref. nr. <input type="text"/>	Weight kg <input type="text"/>		

3 Assembly

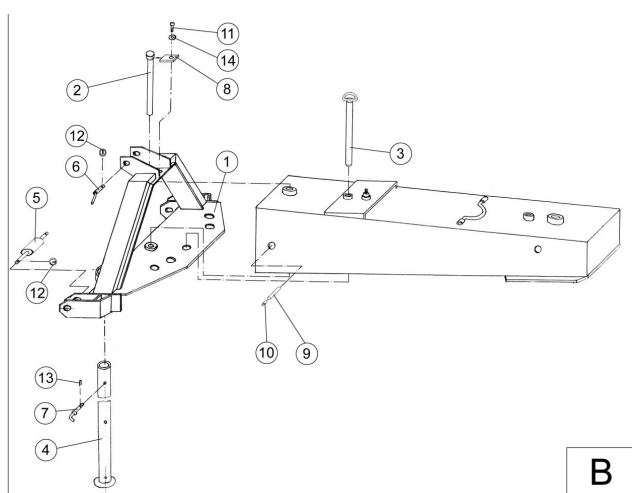
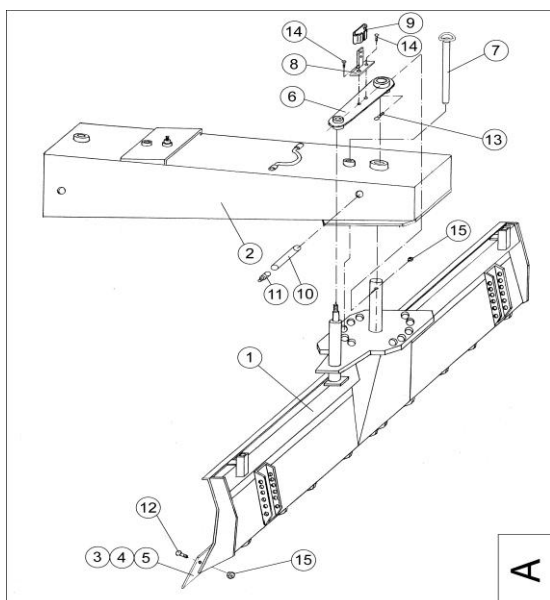


Warning!

Use suitable equipment when the parts are taken out of the wooden racket, crushing hazard. Do not lift the parts by hand.

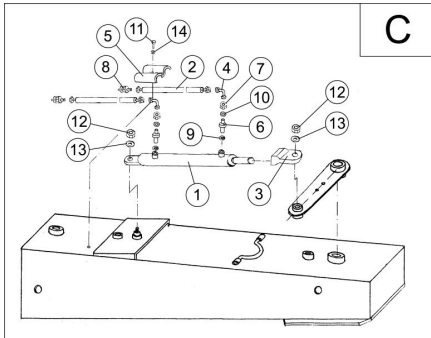
For bolt and screw torque settings, see Table 1 in section 5.1.

The excavator blade is delivered packed in a wooden racket.



Explanation to the figures below:
e.g. (A-2) means Fig. A part number 2

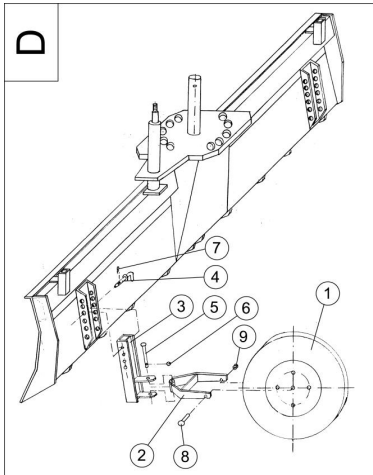
1. Remove the plastic and tie two lifting straps to the frame and remove the board that is holding back the frame. Lift the frame out of the racked and put it down on the floor. Leave the excavator blade in the bracket. Unscrew the other parts from the wood and lift them out of the bracket.
2. Fit the three point hitch (B-1) to the frame (A-2) with the stud, (B-2) lock plate (B-8), screw and washer. Lubricate the stud with grease before fitting.
3. Remove the link (A-6) from the blade.
4. Prepare a place for fitting the beam to the blade, cut/remove wooden planks.
5. Tie two lifting straps to the frame/three point hitch at suitable positions. Lift the frame with the three point hitch over the blade and fit the parts over the stud of the blade (blade and frame at 90 degrees angle from each other). Lubricate the stud with grease before fitting.
6. Fit the link (A-6) with screw and screw nut. Put in and lock the support leg (B-4). Lower the frame. The excavator blade must now stand on its own.



7. Remove the screw nuts and washers on the securing studs on the beam and the blade respectively. Fit the hydraulic cylinder (C-1) for turning the blade. Fit the screw nuts and the washers and tighten them.

8. Fit hydraulic hoses, angles and coupling to the cylinder according to the drawing. C.

9. Attach the bracket for the supporting wheels (D-3) at the desired height to the fixing rails on the back of the blade, lock with pins (D-4) and locking pin.



LARGER VERSIONS OF THE SHOWN DRAWINGS IN THE SPARE PARTS LIST AT THE END OF THIS MANUAL:

4 Using the excavator blade

4.1 Before starting up, connection to tractor



BEFORE CONNETING THE EXCAVATOR BLADE TO THE TRACTOR, make sure that:

- The tractor parking brake is tightened
- No one is between the tractor and the excavator blade

WHEN CONNETING THE EXCAVATOR BLADE TO THE TRACTOR, make sure that:



- That the hydraulic hoses are connected in the right direction. Make sure not to spill hydraulic oil on your hands.
- Do not stand between the tractor and the excavator blade when are using the lift. Make sure that the supporting pad is locked in the upper position before you drive off.
- Do not stand or walk under lifted excavator blade.
- Check that all cotters and locking pins are correctly attached to the equipment.

Check that the dimensions of the excavator blade matches your tractor concerning power and weight. The blade is suitable for middle sized tractors.

- Attach the excavator blade to the three pint hitch on the tractor by reversing the hydraulic arms of the tractor in between the brackets on the excavator blade in order to fit the draw rods.
- Apply the tractor parking brake.
- Mount the tractor lifting jibs to the rods and lock them with locking pins.
- Lift the excavator blade a bit from the ground.
- Lift the support pad and lock it in the upper position.
- Check that the hydraulic arms side limiter are locked, adjust them if needed.
- Connect the hydraulic hoses of the excavator blade.
- Remove any dirt that might remain from the transport from the cylinder rods (chrome parts) and apply a thin layer of motor oil.
- Check the hydraulic function and make sure that the cylinder is driven in the usual direction (mark up hoses and couplings if needed).
- Lift the excavator blade with the lifting arms to the top position and check that the tractor push rod is not so high up that it hits the cabin.
- Adjust the wearing edge hight with the supporting wheel and the hight of the lifting arms from the ground (the pivot pin on the blade must be perpendicular). Change the push rod length if needed.

4.2 Adjustments

ADJUSTING A MECHANICAL EXCAVATOR BLADE:

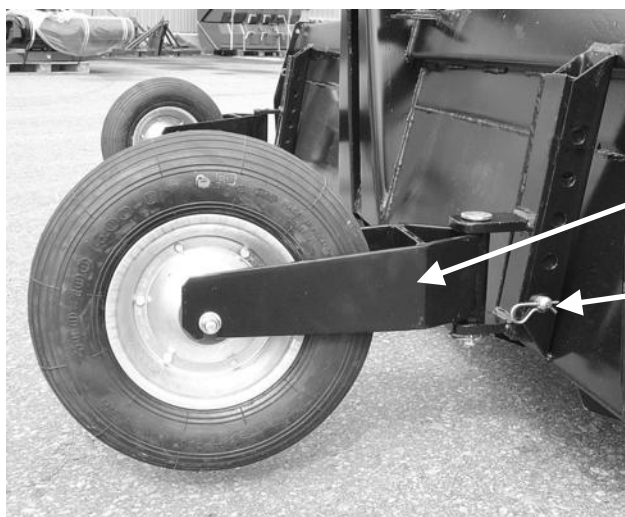


- Adjust the adjusting holes against each other using the locking pin, not with your fingers.
- Do not hold your hand between the blade and the frame when you adjust the blade.
- Do not hold your hand between the frame and the three point hitch when you adjust the frame.
- Do not adjust the frame with the lift in the upper position or if the tractor is standing on sloping ground since the excavator blade suddenly can start turning. Make the adjustments on even ground with the frame in a horizontal position.
- The blade can suddenly start turning and be dangerous when you have removed the locking pin and adjust the blade. Lift the blade approx. 0.5 m from the ground before you adjust it.

Working depth

The working depth of the equipment can be adjusted on its back side using two adjustable supporting wheels and by setting the height of the three point hitch from the ground. The height of the supporting wheels can be changed by loosening the retaining pin and putting it through the attachment in another hole on the attaching bar on the blade.

To reduce wear of the wearing edge during e.g. snow clearance at the beginning of the winter it is recommended to adjust the edge 1-2 cm above the ground. Later, the height can be adjusted to allow the equipment to scrape as much as required.



The supporting wheel height can be adjusted by loosening the pin and placing it in another hole on the wheel attachment.

Wheel attachment

Retaining pin with cutter pin

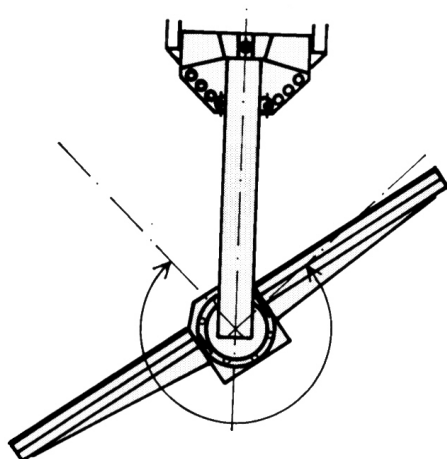
NB! Fit the pin as low as possible in order to give the attachment as much stability as possible.



NB!

Before adjusting/fitting the supporting wheels make sure that the excavator blade is fitted correctly to the tractor so that the pivot pin on the blade is perpendicular.

Setting the blade working angle



Turn the blade from towed to reversing position by pushing the cylinder to its outermost position and shift with the cylinder in that position the hydraulic direction so that the blade turns around to the reversing position. In some cases it might be necessary to turn with the tractor and drive at the same time. Pull in the cylinder when the blade passes the centre.

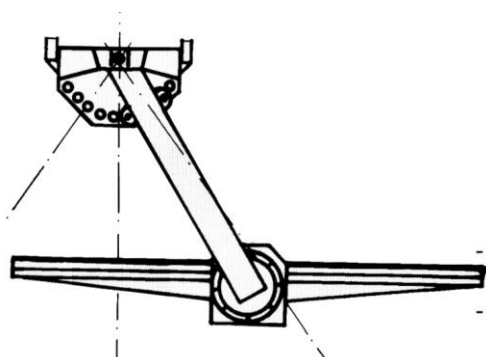


NB! The hydraulic cylinder has a damping function in the end positions. When the cylinder speed is slowed down, keep up the oil flow until the cylinder reaches the respective end position.

The blade angle can be adjusted infinitely variable according to the drawing. When changing the blade angle, make sure that the excavator blade is fitted correctly so that the pivot pin on the blade is perpendicular.

NB! The locking pin (Fig. A-7 in the spare parts list) must not be fitted on blades with hydraulic turning.

Setting the main frame angle



The main frame can be placed in 5 different positions. The frame is locked with a locking pin.

To change the frame settings the excavator blade must be in a horizontal position and lowered to the ground. Remove the locking pin. Drive the tractor and turn to put the frame close to the hole that is to be used. Put in the pin and keep driving until it is securely fitted in the hole.

Wearing edge



The wearing edge has a jagged and an even side.

The jagged wearing edge is suitable for scraping softer material like ice and hard packed snow.

The even side can be used for most types of work. The even side provides a longer service life than the jagged one when working on hard ground.

Unscrew the screws that are holding the edge and turn it according to your requirements.



Warning!

At any time when performing repairs and maintenance, the equipment must be lowered down and the tractor engine turned off. Withdraw the ignition key from the switch.

4.3 Driving with the excavator blade

WORKING WITH THE EXCAVATOR BLADE:



- Comply with traffic laws and regulations when driving on public roads.
- Make sure that no unauthorised persons are in the immediate vicinity of the excavator blade.
- When driving the tractor pay attention to that the excavator blade describe a curve that is considerably different to the path of the tractor.
- There is a risk of sudden jerks of the excavator blade and the tractor suddenly come to a stop at an obstacle. Adjust the tractor speed in order not to endanger yourself, the tractor, the excavator blade or other traffic.
- When excavating to the side, pay attention to that a possible obstacle or the soil or the snow being excavated can turn the tractor to the side.

The equipment is designed to clear snow from level ground such as roads and parking lots. The equipment can also be used for lighter ground levelling and excavation work.

Adjust and set the blade to suit the work in question. Adjust the speed to the ground and to the type of work you are doing. Pay attention and make sure that the blade does not get stuck on stones or similar objects. Always lift up the blade from the ground before you change the driving direction of the tractor.



NB! A doubled driving speed, make the stress at the equipment four times higher. Do not drive faster than absolutely necessary. Damages on the excavator blade caused by impact with heavy, solid objects isn't covered by the warranty.



Excavator blades with supporting wheels must always be lifted up before the tractor can be driven in an opposite direction. Otherwise, tyres and rims can be damaged.

When clearing great masses of material you should work yourself through in several runs.

5 Service and maintenance



Warning!

When performing any form of maintenance, repairs or service, the equipment must be lowered to the ground and the motor of the tractor must be switched off. Withdraw the ignition key from the switch.

No work is allowed unless the equipment is safely secured. Always use protective equipment such as goggles and gloves when carrying out maintenance.

Do not use your fingers when examining small openings. This is to avoid accidents.

To avoid injury to other persons, make sure that nobody is in the proximity.

5.1 General

Always use high quality lubricants. All kind of work that has to be done under an elevated equipment must only be performed if the machine has been carefully secured. Only use suitable tools. Keep the equipment clean under the chassis to obtain good function and prevent corrosion. After cleaning with water the equipment must be lubricated.

Use the table below for the correct torque settings for the screws and bolts of the equipment.

Table 1 - Torque settings

Diameter	Class 8.8		Class 10.9	
	Nm	lb.ft.	Nm	lb.ft.
M8	25	18	35	26
M10	50	37	70	52
M12	90	66	125	92
M14	140	103	200	148
M16	215	155	305	225
M18	295	217	420	309
M20	420	302	590	438

When a locking nut is used, increase torque by 5%.

5.2 Maintenance schedule

Position	Interval	*Action	Lubricant	Note
Pivot, blade	8 h	L	Grease NLGI 2	
Pivot, beam	8 h	L	Grease NLGI 2	
Turning cylinder	8 h	L	Grease NLGI 2	
Wearing edge	8 h	C/R	-	Change wearing edge before the blade wear against the ground.
All screws and bolts	40 h	C/A	-	See Table 1 Section 5.1
Other movable joints	40 h	L/C/A	Engine oil 10W30	
Tyre pressure, supporting wheels	40 h	C/A	-	1,8-2 Bar

* Action codes: A= Adjustment, C= Control, Cl. = Cleaning, R=Replace, L=Lubrication

When lubricating, use NLGI 2 grease with high quality EP characteristics.

These intervals are to be used for normal usage, when operating continuously, lubricate more often. Always lubricate after cleaning with water.

5.3 Before season begins

All the above points must be performed. Equipment well serviced lasts longer.

5.4 After end of season

Clean the equipment thoroughly before it is lubricated and maintained. When the equipment is dry, we suggest that you cover the parts where the material has worn off the paint with a thin coating of oil.

6 Troubleshooting

Problem	Probable cause	Action
The blade cannot be turned with the hydraulic cylinder.	The cylinder has a built in damping function and has not react the end position.	Keep up the oil flow to the cylinder until it has reached the respective end position.
There is snow left on the surface.	Supporting wheels set too low. The towing attachment is too high. The wearing edge is worn.	Adjust the height. Adjust the towing attachment. Turn it over or replace it.



Warning!

Before performing maintenance, service, repairs or adjustments the equipment must be lowered to the ground, the tractor engine must be turned off and the key must be removed from the ignition switch.

7 Spare parts

7.1 Use original spare parts

Your choice is “original” or “copies”!

Price is often the deciding factor. A “cheap” choice may well turn out to be an expensive one in the end.

Some reasons to choose TREJON spare parts:

- Quality and fitting
- Reliability
- Longer service life and therefore better economics
- Guaranteed availability through the TREJON sales partners

The TREJON original spare parts are specifically made for this equipment. The fitting and/or use of non-original parts and accessories may change the technical qualities of your equipment in a negative way. The manufacturer does not give any guarantee for damages caused by using non-original parts or accessories.

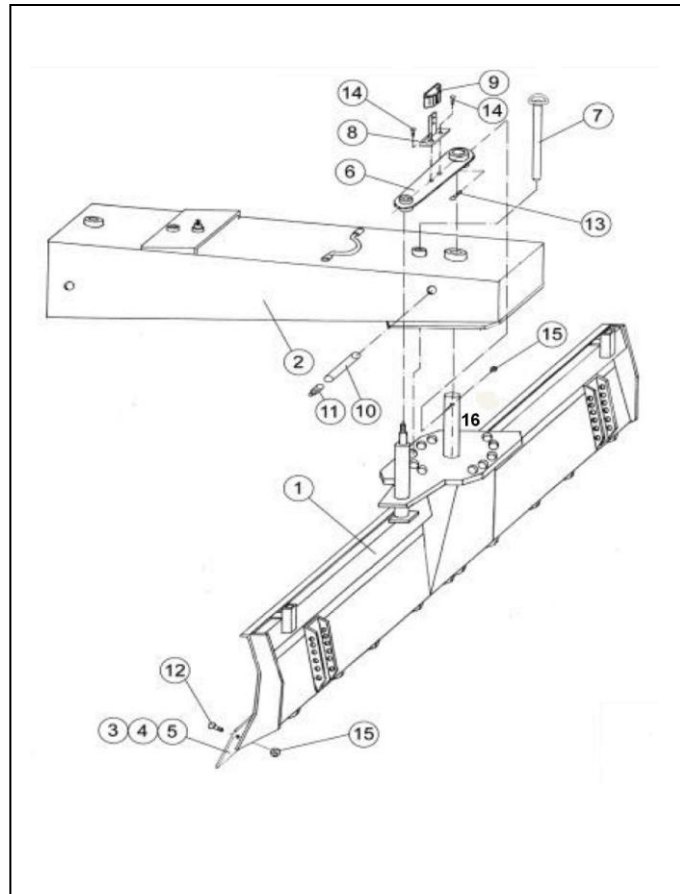
The guarantee does not cover arbitrary changes made on the equipment.



Contact the authorised dealer where you purchased the machine when you want to order repair parts or need other assistance.

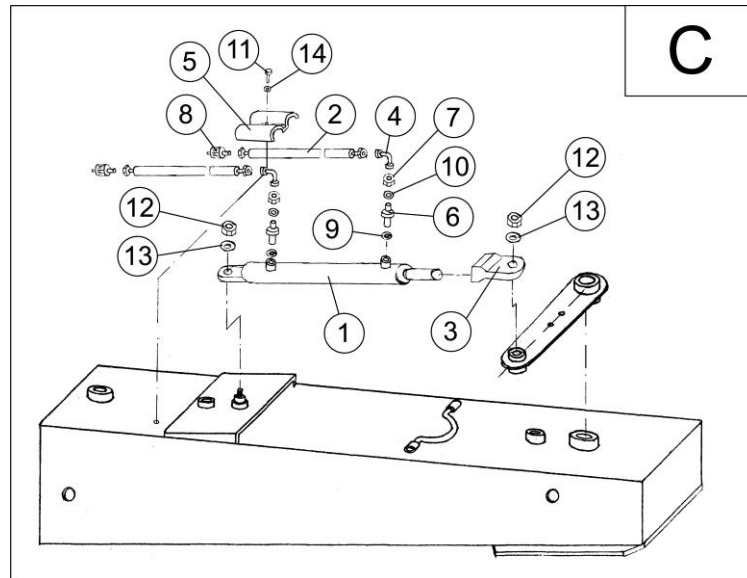
When you are ordering spare parts, make sure you know the model, type and serial number of the machine. See the plate on the chassis.

7.2 Spare parts list



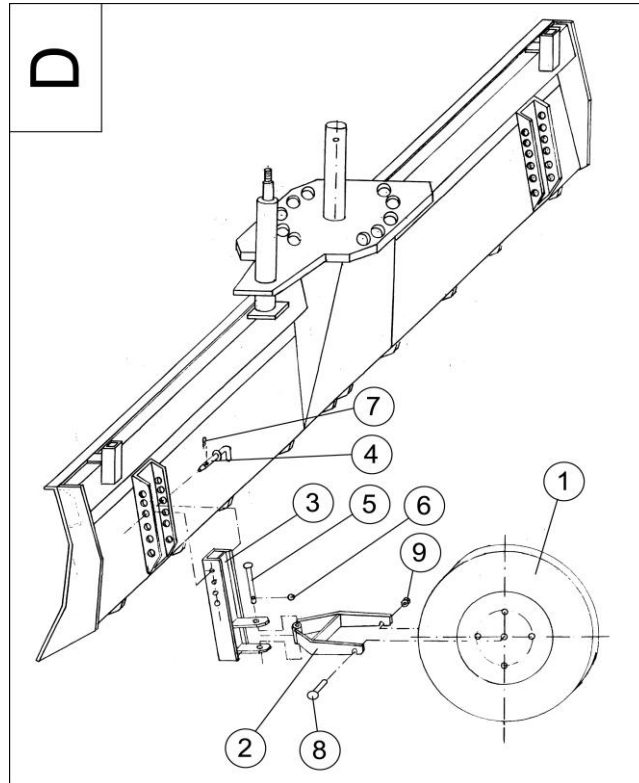
7.3 Table A Blade

Pos	Item number	Name	Number	Note
1	4291-001	Blade TR 250H1	1	
2	4291-002	Frame	1	
3	TR-164-12	Steel cutter jagged-jagged	3	
4	TR-165-12	Steel cutter even-even	3	
5	TR-166-12	Steel cutter jagged - even	3	
6	4291-006	Link	1	
7	4291-007	Pin	1	
8	4291-008	Attachment	1	
9	PN-93-S-73103	Bracket	1	
10	4291-010	Extender	1	
11	PN-79-M-82002	Lubricant nipple M8x1	1	
12	959-590270	Screw MVBF 16x45 8,8	9	
13	M6S16x110-8,8FZB	Screw M6S 16x110 8,8	1	
14	M6S8x20-8,8FZB	Screw M6S 8x20 8,8	2	
15	KL8M16FZB	Screw nut M6M 16 Loc	10	
16	4291-049-1	Axis bolted	1	



7.5 Tabell C Hydraulics

Pos	Item number	Name	Number	Note
1	4291-030	Hydraulic cylinder	1	
2	4291-031	Hydraulic hose	2	
3	4291-030-1	Lug	1	
4	PN-65-M-73142	Press nipple	2	
5	4291-034	Clamp	1	
6	PN-65-M-73123	Adapter	2	
7	PN-65-M-73109	Jam nut	2	
8	4291-037	Quick-coupling male	2	
9	PN-60-M-73140	O-ring	2	
10	PN-60-M-73140	O-ring	2	
11	M6S8x16-8,8FZB	Screw M6S 8x16 8,8	1	
12	KL8M24FZB	Screw nut M6M 24 Loc	2	
13	BRB25FZB	Washer BRB 25	2	
14	BRB8,2x16x1,6	Washer BRB 8.2	1	



7.6 Tabell D Supporting wheels

Pos	Item number	Name	Number	Note
	TR-163	Support wheel kit		One pair
1	4291-044	Wheel 4,00x8	2	
2	4291-045	Fork	2	
3	4291-046	Attachment	2	
4	4291-047	Pin	2	
5	4291-048	Pin	2	
6	BN-81-/1902-31	Washer 11x45	2	
7	BN-81-1902-04	Hairpin	2	
8	M6S16x1501-8,8FZB	Screw M16x150	2	
9	KL8M16FZB	Screw nut M16 Loc	2	



EG-Declaration of Conformity

Conforming to EEC Directive 2006/42/EG

We **TREJON FÖRSÄLJNING AB**
(Name of supplier).....

SE – 911 35 Vännäsby, Företagsvägen 9
.....
(Full address of company – where this concerns authorized agents within the Common Market, also state the company name and manufacturer)

declare in sole responsibility, that the product

Excavator blade OPTIMAL TR-250J
.....
(make, model)

to which this certificate applies, conforms to the basic safety and health requirements of EEC Directive 2006/42/EG,
(If applicable)
and to the other relevant EEC Directives.

— — —
.....
(Title and/or number and date of issue of the other EEC Directives)

(If applicable)

To effect correct application of the safety and health requirements stated in the EEC Directive, the following standards and/or technical specifications were consulted:

EN ISO 12100-1: 2003 EN ISO 12100-2 : 2003
.....
(Title and/or number and date of issue of standards and/or specifications)



Vännäsby, 01.01.2010
.....
(Place and date of issue)

Håkan Johansson
Managing Director
.....
(Name and job function of authorized person)

Guarantee- /assignment certificate

- Guarantee terms** - Valid between retailer (Trejon AB dealer) and machine purchaser.
- General about guarantee - In order to obtain valid guarantee terms set forth below, and the specific guarantee terms set by each provider. These are attached to the user manual for each machine, as appropriate.
- Validity of guarantee - The guarantee is 12 months from date of purchase.
In some cases, the guarantee can be limited by running time.
- The guarantee covers - Damaged parts, which have broken down because of defective production operations of materials in course of normal use of the machine.
- Only the labor cost for replacement of defective warranted part.
- The guarantee does not cover - Transport costs applicable to the machine or the parts.
- Travel costs.
- Any resulting costs incurred as a result of damage to the machine.
- If the machine has been modified by the owner.
- Damage due to normal wear and tear of the machine – Not related to manufacturing defects, poor service, user inexperience or use of spare parts that are not original.
- Excessive or inappropriate use of the machine.
- The guarantee is not applicable to parts which are subject to wear, for example hoses, sealing, oil, belts, batteries, chains, knives etc.
- The guarantee period for replaced parts during the guarantee period expires with the machine's guarantee.
- Normal adjustments, maintenance or supervision
- Guarantee procedures - Contact place of purchase as soon as any damage or malfunction is detected.
Do not use the machine if the damage can be worse.
- Guarantee repairs must be performed by Trejon AB approved workshop.

ATTENTION!

The guarantee shall enter into force provided that the machine GUARANTEE/ ASSIGNMENT CERTIFICATE has been fully completed and signed by both parties (seller, buyer), and a copy sent in to Trejon AB no later than 14 days from date of sale (the seller is responsible for this happening).

Assignment certificate:

Machine Buyer shall confirm with his signature that he had received manual containing operating instructions, and received information about the operating, security and maintenance requirements described in this and made the final inspection of the machine.

PLEASE FILL IN!



Product: _____ Serialno. _____

Salesman: _____ Company: _____

Signature of salesman: _____ Date of purchase: _____

Name of buyer: _____ Telephone: _____

E-mail: _____

Address: _____ Zipcode: _____

City: _____ Country: _____

Date: _____ Signature of buyer: _____

TREJON AB reserves the right to change or to improve shown models using technical or commercial reasons, without demands to carry out the same improvements on equipment already delivered. Pictures in the manual do not necessarily show the equipment as delivered.

Technical data, weights and measures are without obligation. With reservation for mistakes and errors.

© 2013 Trejon AB, Sweden

Copying, translation and excerpts are only allowed with a written permit from TREJON AB, Företagsvägen 9, SE – 911 35 Vännäsby.

All rights reserved.



TREJON AB
Företagsvägen 9
SE-911 35 VÄNNÄSBY
SWEDEN
Tel: + 46 (0)935 399 00
Fax: + 46 (0)935 399 19

