



Instructions for use and Maintenance

V-plough
VPT280, VPT320, VPT360, VPT400



Note! Read instructions before use.



TREJON AB
Företagsvägen 9
SE-911 35 VÄNNÄSBY
SWEDEN
Tel: + 46 (0)935 39 900
Fax: + 46 (0)935 39 919



■ TABLE OF CONTENT

1	Introduction	7
1.1	General information.....	7
1.2	Description of V-plough	7
2	Safety instructions	7
2.1	Safety precautions	7
3	Technical description.....	8
3.1	Attachment.....	8
3.2	Skid shoes	8
3.3	Scraper steels	8
3.4	Hydraulics	8
4	Technical data	10
5	Installation	11
5.1	Instructions for lifting the implement	11
5.2	Attaching the plough to the vehicle.....	12
5.3	Hydraulics	12
6	Assemble	13
6.1	Function control box.....	14
6.2	Function FlexiMove™-tilt joint.....	14
6.3	Electricity.....	16
5.7	Driving instructions.....	17
7	Service and maintenance	18
7.1	General maintenance	18
7.2	Lubrication	18
7.3	Scraper steels	18
7.4	Long term storage	18
8	Spare parts	19
8.1	Use original spare parts	19
9	Notes.....	20

SAFETY SYMBOLS

Note! This warning symbol is used throughout this instruction manual to call attention to safety precautions that you, your employees or any other people that may come near the implement must read and understand. Failure to follow these instructions may result in serious injury or even death.

This symbol means:



WARNING!
CAUTION!
YOUR SAFETY IS
ENDANGERED!

A word of advice

Pay special attention to the words **WARNING!**, **CAUTION!** and **NOTE!** in the safety instructions. The words have been chosen from of the following:



WARNING! This safety sign is used to identify potential hazards that can lead to serious injury or even death. These hazards include situations that may occur when the safety equipment and/or the safety shields are removed. Signal words can also be used to alert about dangerous use.



CAUTION! Failure to observe this warning sign could result in light personal injuries. The sign is also used to indicate that the disregarding of these instructions may cause damage to the implement.

Dear Customer,

You have made a good choice. We congratulate you to your selection of a OPTIMAL product that offers quality and performance with reliable service.

By reading the manual and following it's recommendations you will ensure the long and effective use of the equipment.

We have produced this manual for you to get a good understanding of the functioning of the equipment and what safety and maintenance instructions to follow when working with it. If any question should arise when using the equipment or when reading this manual, you are welcome to contact us for further information.

TREJON AB
Företagsvägen 9
SE-911 35 Vännäsby
Sweden

Tel: + 46 (0)935 39 900
Fax: + 46 (0)935 39 919,
Repair parts.Fax: +46 (0)935 20241
Email: info@trejon.se
Website: www.trejonindustries.se

Honoured retailer,

in order for the guarantee to be valid and to fulfill all legal requirements, we ask you to fill out the guarantee form together with the customer and return it to TREJON.

The guarantee is valid from the day the equipment is handed over to the customer.

Delivery checklist:



Check for damages caused in transporting. Inform the transporting company.	
Check that all packing material has been taken away. Dispose packing material in an environmentally friendly way	
Check that the machine is lubricated, see section "Service and maintenance".	
Check that all screws are properly tightened, see section "Service and maintenance".	
Make a function test.	
Having gone through and explained to the customer, with the help of the manual, the startup, use and maintenance of the equipment and its accessories.	
Fill out the guarantee form with the customer and send it to TREJON AB. It can be found as an attachment to this manual and as a copy on the last page.	
Instruction manual given to the customer.	

Enter the serialnumber of the equipment to the right.	S/N:
---	------

1 Introduction

1.1 General information

We strongly recommend that you read the user's manual and the safety instructions carefully. The operator must be familiar with the V-plough in order to ensure safe usage.

1.2 Description of V-plough

This appliance is designed for snowploughing streets, car parks and other areas.

The appliance is intended for mounting onto an available attachment on farm tractors, bucket loaders and compact tractors. The OPTIMAL VPT-plough can be equipped with a quick coupling for mounting onto most tractor models. The standard V-plough is equipped with an electric hydraulic power unit.

The V-plough can be set to three different positions depending on the type of work to be done. POINTED SNOW PLOUGH for conventional snowploughing, Y- PLOUGH for pavements, street crossings and other areas where the collecting and removing of snow is desirable, DIAGONAL SNOW PLOUGH for car parks, streets etc. The scraper steels are spring-loaded and reversible. The outer scraper steels have bent-over edges (scraper steels for pavements) which reduce the risk of damage when an obstacle is encountered. The OPTIMAL VPT-plough has a hinged suspension and FlexiMove™-tilt joint, which enables the implement to follow uneven surfaces. The plough is as standard equipped with a so-called diagonal valve, which make it possible to operate the wings individual or both together parallel (when one wing moves in the other one moves out).

2 Safety instructions

2.1 Safety precautions



This plough is intended for snowploughing.



Keep individuals, animals and vehicles out of the working area.



Be careful not to hit kerbs and traffic islands.



The machine can catch stones or other hidden objects and then discharge them during snowploughing.



CRUSH HAZARD! Be aware of the risk of being caught between the plough wings and the central piece. KEEP CLEAR of the working area when the tractor is running.



Never reverse the tractor when the plough is lowered (wrong direction).



Always turn off the tractor's engine when maintaining and repairing the implement.



CAUTION! WARNING! CRUSH HAZARD!

Avoid getting caught between the central piece and the plough wings

3 Technical description

The wings of the V-plough can be individually adjusted to pivot forwards and backwards: 30°. Thanks to this, the plough can be used in a pointed, diagonal, or Y position:

3.1 Attachment

The attachment is articulated for a horizontal tilt.

Always supply details of the type of mounting system or the suspension of the vehicle onto which the plough is to be installed when ordering a V-plough.

3.2 Skid shoes

The V-plough is equipped with two skid shoes which can be set to different heights with a crank handle, see figure 2. During the season's first ploughing, it is most suitable to set the skid shoes to a lower position in order to avoid unnecessary wear on the scraper steels. After that the skid shoes should be set to the same height as the scraper steels.

3.3 Scraper steels

The scraper steels are reversible. Each mouldboard is spring-loaded thus reducing the risk of damage when an obstacle is hit.

The plough is delivered with scraper steels with bent-over edges (plough blades for pavements) that reduce the risk of damage if a kerb is hit. These scraper steels can be reversed by shifting the left or right mouldboard.

3.4 Hydraulics

The V-plough is powered by a double-acting hydraulic outlet connected to the tractor's hydraulic unit or the third or fourth hydraulic function of the loader.

The plough is equipped with an electric/hydraulic diagonal valve which make it possible to operate the wings individual or both together parallel (in diagonal mode). The electric/hydraulic diagonal valve is operated by a hand unit in tractor's cabin.



Figure 1: Overview A

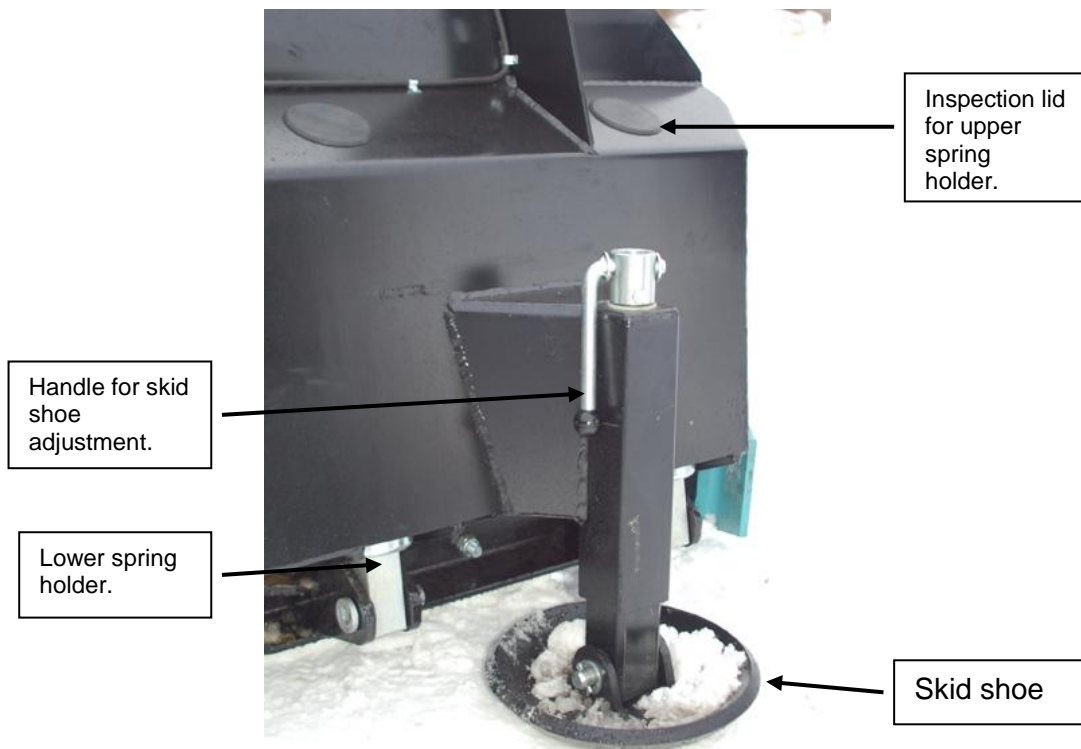


Figure 2: Overview B

4 Technical data

Modell	280	320	360	400
Width, mm	2800	3200	3600	4000
Working width, V-position, mm	2540	2920	3110	-
Full height, mm	1000	1000	1000	1000
Wing angle, degrees	30	30°	30°	30°
Reversible scraper steels, pcs.	2+2	2+2	2+2	2+2
Weight, kg	820	880	910	950
Power unit	Hydr./Elec.	Hydr./Elec.	Hydr./Elec.	Hydr. /Elec.
Tension, Volt *	(12)/24	(12)/24	(12)/24	(12)/24
Min. hydraulic pressure, bars	150	150	150	150
Max. hydraulic pressure, bars	175	175	175	175

Figure 3: Data tables

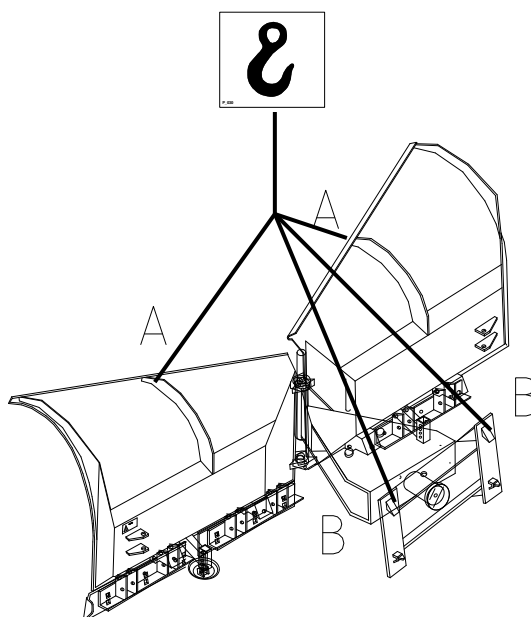
* The plough is delivered with a 24-volt coil, which can be replaced with a 12-volt coil.

5 Installation

5.1 Instructions for lifting the implement

The V-plough is delivered strapped onto a Euro pallet. There are two ways of lifting the plough from the pallet.

- directly onto the tractor's attachment
- by a lifting tool such as a chain. Attach the lifting tool to the plough wings via the holes on the supports, pos. A as well as around the hooks on the implement's attachment arm, pos. B.



CAUTION! ENSURE THAT NO ONE IS IN THE RISK ZONE DURING LIFTING.

5.2 Attaching the plough to the vehicle

The V-plough's attachment arm fits the system of which details you supplied when ordering the plough.

Mount the V-plough onto the tractor's attachment as described in the tractor's manual.

Ensure that the plough moves freely out of the tractor when attaching the plough.

5.3 Hydraulics

The V-plough is equipped with two 1.5-metre pressure hoses for attaching to the loader's third hydraulic function or to another double-acting outlet on the tractor.

When in doubt about how to install the hydraulics, contact the tractor's supplier.

The valves have a built-in shock function. If the hydraulic pressure inside the positive side of the cylinder exceeds the set limits, the shock valve opens, releasing surplus pressure in an accumulator.



Warning!

Modifications at ploughs hydraulic system and its connections will result in damages at machine if hitting any firm obstacle.

6 Assemble



Caution!

Check that rated voltage at coils agree with voltage from tractor before use.

The diagonal valve is delivered together with control box, cables and sockets for connection at plough and to electric current (see figure 4).

- Mount control box at a safe place in the tractor cabin.
- Mount cable in a safe way at the tractor/front loader.
- After connection of plough, attach the electric connection from tractor at the plough socket. If cable is too long, attach surplus cable in a safe way.
- Connect electric socket to power supply in tractor. The socket fits both 12mm and 21mm connection.
- Connect the electric cable (+pole) for position light in a way that it gets power supply when lights at the tractor is turned on.

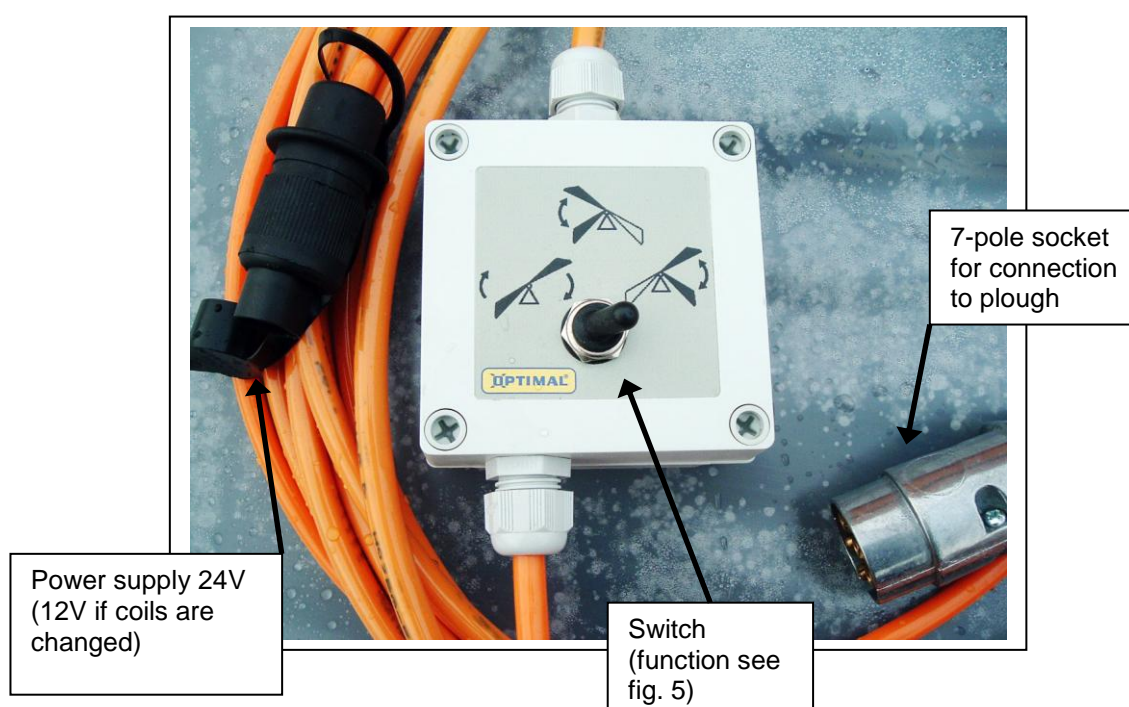


Figure 4: Control box

6.1 Function control box

Depending on the position of the switch, the plough is operated in the following way from the tractors double acting hydraulic supply.

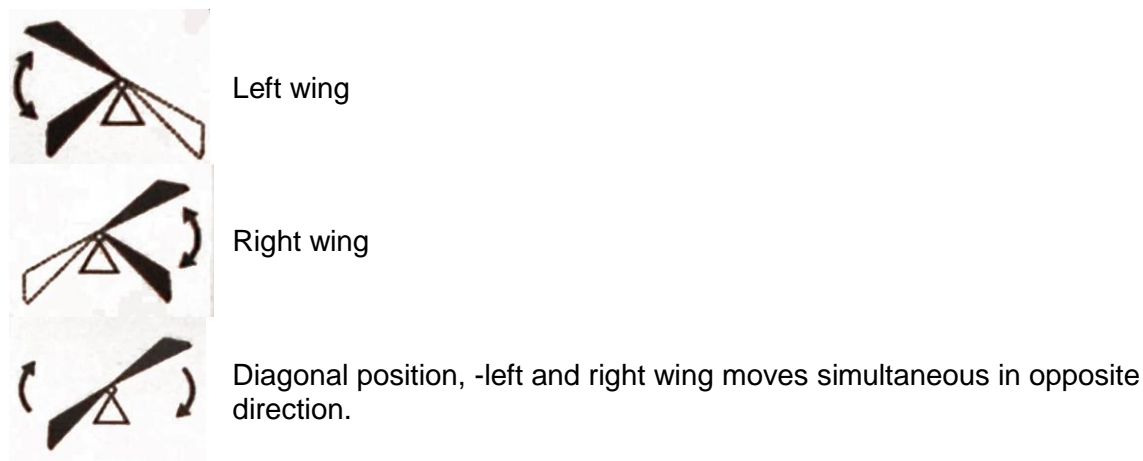


Figure 5: Control box symbols

6.2 Function FlexiMove™-tilt joint

The plough is as standard equipped with the FlexiMove™ tilt joint, which contribute the machine to get best possible adaption to contours of ground.

The indicator at the FlexiMove™-tilt joint shows how much force that is applied at the device.

Indicator moves upwards with decreased force at front of the plough.

There is no universal measure for a suitable pressure at the FlexiMove™-joint, but together with the knowledge based on experience the indicator can be a good help to find a suitable pressure.

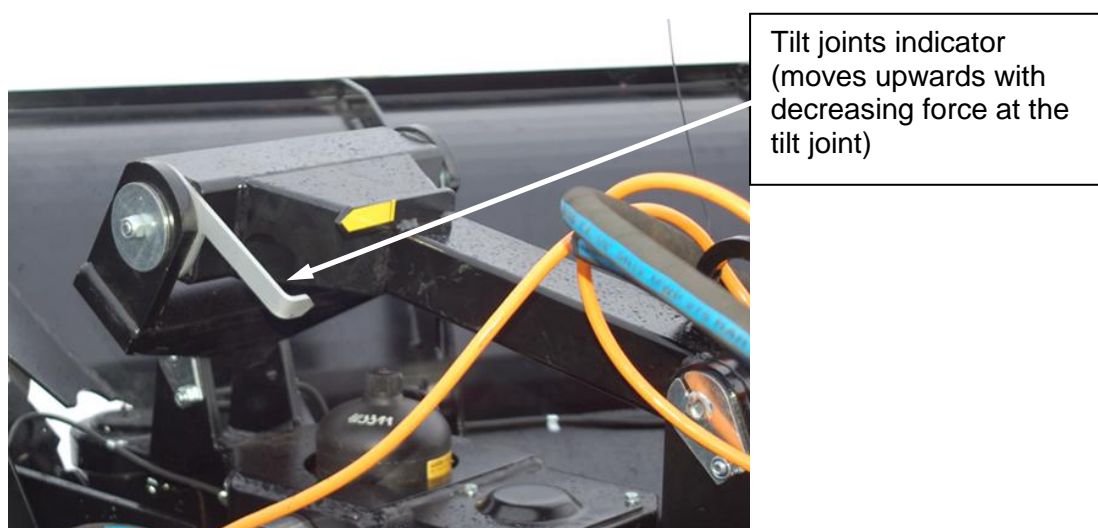


Figure 6: Tilt joint indicator

To limit down flex of the tilt joint when lifting in a tractor application without tilt function (for example front lift without hydraulic top link), the chain delivered with the machine can be used (see figure 7).

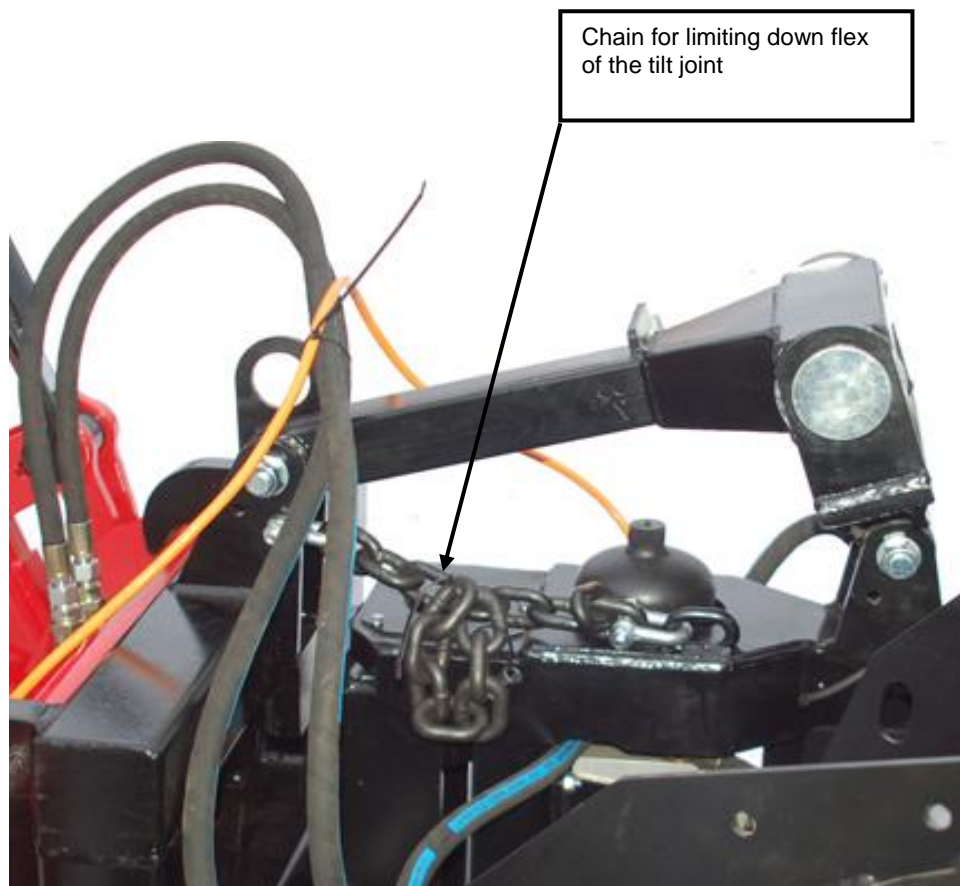


Figure 7: Down flex chain

6.3 Electricity

The V-plough is delivered with an control box, with a male electric plug for connection to plough, socket for power supply to control box and cable for power supply to position lights, see figure 8 for wiring diagram.

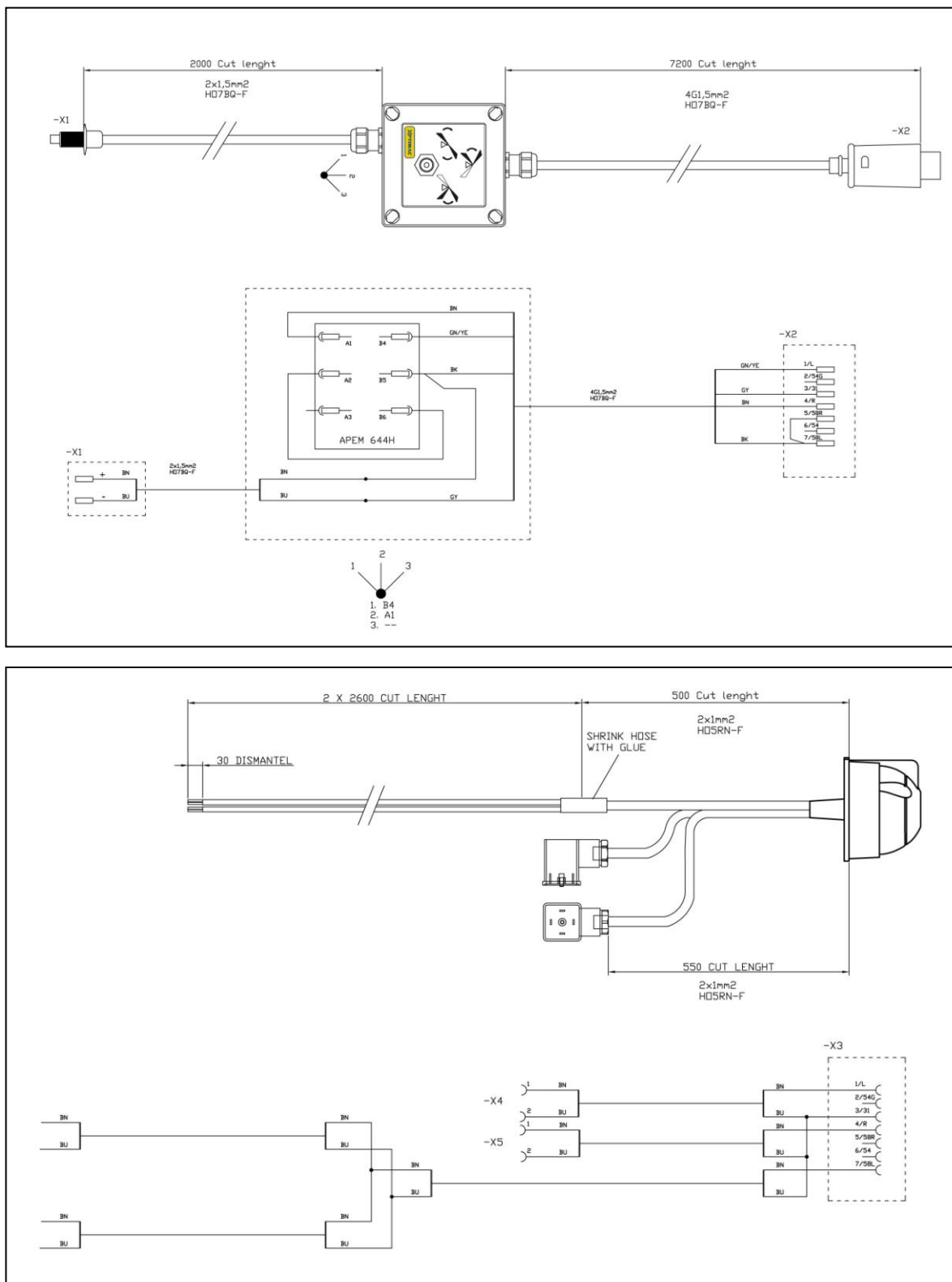


Figure 8: Electric scheme

5.7 Driving instructions



The OPTIMAL V-plough is intended for the ploughing of snow.

The plough can be used as:

- ✓ A POINTED PLOUGH for conventional ploughing.
 - ✓ A Y-PLOUGH for pavements, street crossings and other areas where the collecting and removing of snow is desirable.
 - ✓ A DIAGONAL PLOUGH for the snowploughing of car parks, streets etc.
- By means of an electric plug, the driver chooses which wing to move and also commands the hydraulic oil flow via a double-acting outlet.
 - The V-plough is equipped with two skid shoes which can be set to different heights with a handle. Take care that this skid shoes is clean and can move free. Skid shoes must be levelled to ground before lowering plough, all to avoid damages on attachment device.



When ploughing in a pointed plough position, don't drive with the cylinders close to each other. (The accumulator cease to function if the cylinders are very close to each other). Avoid running into posts, railings etc. The plough is equipped with a shock valve that allows oil from the positive side of the cylinder to flow to the accumulator in case of collision. A collision brings about increased strain on the plough. When the cylinder reaches its lowest mechanical position there is no collision protection and the plough's frame can be damaged.



Be careful not to hit kerbs and traffic islands. The standard plough is supplied with scraper steels for pavements which reduce the risk of damage to the machine.



NEVER DRIVE THE LOADER IN THE FLOATING POSITION!!
Don't push the plough down as this puts unnecessary strain
on the implement and increases wear.

NEVER REVERSE WHEN THE PLOUGH IS LOWERED!!

7 Service and maintenance



Ensure that the engine is turned off when performing maintenance

7.1 General maintenance

Check the screw joints every week.

Check the hydraulic hoses and hydraulic couplings at least once a week. If the components are worn or cracked, they need to be replaced.

The hydraulic cylinder packing should only be changed by qualified personnel from the tractor distributor network.

7.2 Lubrication

The lubricant nipples, should be lubricated once or twice during the season. Use NLGI 2 grease with high EP characteristics.

7.3 Scraper steels

Turn the scraper steels before they start wearing out the plough's chassis. In order to turn the outer scraper steels, shift right and left. Replace scraper steels when they are worn out.



Be careful not to get caught between the scraper steels and the ground when replacing the scraper steels.

7.4 Long term storage

Lubricate all lubricant nipples with consistent grease.

The skid shoes should be lubricated with spray oil.

Check all hoses, couplings and screw joints for wear and cracks. Replace damaged components.

Place the end caps on the hydraulic couplings.

8 Spare parts

8.1 Use original spare parts

Your choice is between “original” or “copies”!
Price is often the deciding factor. A “cheap” choice may well be an expensive one in the end.

Some reasons to choose TREJON spare parts:

- Quality and fit.
- Reliability
- Longer service life and therefore better economics
- Guaranteed availability through the TREJON sales partners

The TREJON original spare parts are specifically made for this equipment. The fitting and/or use of non-original parts and accessories may change the technical qualities of your equipment in a negative way. The manufacturer does not give any guarantee for damages caused by using non-original parts or accessories.

The guarantee does not cover arbitrary changes made on the equipment.



Contact the authorised dealer where you purchased the machine when you wish to order spare parts or need other assistance.

When you are ordering spare parts, make sure you know the model, type and serial number of the machine. See the plate on the chassis.



EC-Certificate of Conformity

Conforming to EEC Directions 2006/42/EG

We TREJON FÖRSÄLJNING AB
 (name of supplier)

SE – 911 35 Vännäsby, Företagsvägen 9

.....
 (full address of company – where this concerns authorized agents within the Common Market, also state the company name and manufacturer)

declare in sole responsibility, that the product

V-plough OPTIMAL VPT280	V-plough OPTIMAL VPT320
V-plough OPTIMAL VPT360	V-plough OPTIMAL VPT400

.....
 (make, model)

to which this certificate applies, conforms to the basic safety and health requirements of EEC Directions 2006/42/EG,
 (if applicable)
 and to the other relevant EEC Directions.

— — —

.....
 (title and/or number and date of issue of the other EEC Directions)

(if applicable)
 To effect correct application of the safety and health requirements stated in the EEC Directions, the following standards and/or technical specifications were consulted:

EN ISO 12100-1 : 2003 EN ISO 12100-2 : 2003

.....
 (title and/or number and date of issue of standards and/or specifications)

Vännäsby, 01.01.2009

 (Place and date of issue)



Håkan Johansson
 Managing Director

 (Name and job function of authorized person)

Warranty- /assignment cartificate

- Warranty terms** - Valid between retailer (Trejon AB dealer) and machine purchaser.
- General about warranty** - In order to obtain valid warranty terms set forth below, and the specific warranty terms set by each provider. These are attached to the user manual for each machine, as appropriate.
- Validity of warranty** - The warranty is 12 months from date of purchase when used for personal use.
In some cases, the guarantee can be limited by running time.
- The warranty covers** - Damaged parts, which have broken down because of defective production operations of materials in course of normal use of the machine.
- Only the labor cost for replacement of defective warranted part.
- The warranty does not cover** - Transport costs applicable to the machine or the parts.
- Travel costs.
- Any resulting costs incurred as a result of damage to the machine.
- If the machine has been modified by the owner.
- Damage due to normal wear and tear of the machine – Not related to manufacturing defects, poor service, user inexperience or use of spare parts that are not original.
- Excessive or inappropriate use of the machine.
- The warranty is not applicable to parts which are subject to wear, for example hoses, sealing, oil, belts, batteries, chains, knives etc.
- The warranty period for replaced parts during the warranty period expires with the machine's warranty.
- Normal adjustments, maintenance or supervision
- Warranty procedures** - Contact place of purchase as soon as any damage or malfunction is detected.
Do not use the machine if the damage can be worse.
- Warranty repairs must be performed by Trejon AB approved workshop.

ATTENTION!

The guarantee shall enter into force provided that the machine WARRANTY/ ASSIGNMENT CERTIFICATE has been fully completed and signed by both parties (seller, buyer), and a copy sent in to Trejon AB no later than 14 days from date of sale (the seller is responsible for this happening).

Assignment certificate:

Machine Buyer shall confirm with his signature that he had received manual containing operating instructions, and received information about the operating, security and maintenance requirements described in this and made the final inspection of the machine.

PLEASE FILL IN!



Product: _____ Serialno. _____

Salesman: _____ Company: _____

Signature of salesman: _____ Date of purchase: _____

Name of buyer: _____ Telephone: _____

Address: _____ Zipcode: _____

City: _____ Country: _____

Date: _____ Signature of buyer: _____

TREJON AB reserves the right to change or to improve shown models using technical or commercial reasons, without demands to carry out the same improvements on equipment already delivered. Pictures in the manual do not necessarily show the equipment as delivered.

Technical data, weights and measures are without obligation. Reservation for faults.

© 2012 Trejon AB, Sweden

Copying, translation and excerpts are only permitted with a written permit from TREJON AB, Företagsvägen 9, SE – 911 35 Vännäsby.

All rights reserved.



TREJON AB

Företagsvägen 9

SE-911 35 VÄNNÄSBY

SWEDEN

Tel: + 46 (0)935 39 900

Fax: + 46 (0)935 39 919

