



MULTIFOREST

EN

Forestry technology without compromise



A good day. A Trejon day.



1980

In 1980, the company moved to newly built premises with a large sales area in Vännäsby. In connection with the move, the Johansson brothers founded the company Trejon, which stands for "Tre Johansson". The company's business concept is to provide machinery and equipment for agriculture, forestry, parking and construction operations through a nationwide network of dealers.

In 1986 is the year in which Trejon starts its own production and builds its first own product, the Trejon Optimal snow blower. In the coming years, the range will grow and a complete range of machines for road maintenance will be implemented in the Trejon Optimal series.

In 1999 is an important year in which Trejon becomes the largest single owner of a production plant in Estonia. As a result, the range of machines grew rapidly and today we have a state-of-the-art facility here with over 70 employees.

In 2009, Trejon celebrated the launch of the Multiforest forestry programme at the Elmia Wood trade fair in Jönköping. Multiforest is a full range of forestry trailers and forestry cranes that can be customized to meet the needs of different users.

In 2011, the second generational change in the company took place, when Henrik and Anna Johansson continued to run the company in the third generation and the goals were just as strong today as before.

In 2018, for the spring season, Trejon is expanding its road maintenance program with a complete portfolio of professional sweepers. Trejon Optimal offers five different types of sweepers. Everything from machines designed for smaller tractors and carrier vehicles to heavy equipment for contractors with e.g. wheel loaders.

2019 A major investment program begins in the production facility. A new production system, a new modern laser cutter, and efficient welding robots are purchased to meet the increasing demand.

In 2020, the company invests in a new 625 m² test center for product development to adapt new products for different markets. Trejon celebrates 40 successful years as one of the leading suppliers to the agricultural, forestry and municipal technology industry.

In 2021, Trejon invests in a more efficient powder coating plant and expands robotic welding, which increases the capacity of the production plant. Today, the production unit is equipped with three robotic welding lines.

2024 Since 2024, Trejon has been part of the Swedish industrial group Volati AB, located in the Salix Agricultural, Forestry and Construction division.

2026



A safe investment

Trejon Multiforest timber trailers and cranes transform your tractor into a powerful forestry combination and make working in the forest a pleasure – quickly and effectively for many, many years.

The advantages of Trejon Multiforest are easy manoeuvrability so that the user can work more effectively, a unique movement sequence and maximum wear resistance despite the slim design. In addition, Trejon Multiforest can be individually adapted to the special requirements of each user thanks to the comprehensive range of accessories.

Trejon Multiforest gives the user maximum mobility. In addition, the device convinces with its long durability and optimal force transfer in all positions. It is precisely these characteristics that form the basis for the joy of working in the forest.

To ensure that your investment adds value not only today but also far into the future, all parts are made from Scandinavian high-performance steel grades, then blasted before being treated in a state-of-the-art powder coating facility adapted to heavy products.

The roots of Trejon Multiforest go back to the beginning of the 1950s. The development from then to now is based on the forestry experience of our suppliers as well as on the experience of all our customers who have worked with timber transport and our machines for many years.

What does a forestry trailer need to handle tough terrain?

When choosing a forestry trailer, what features are essential for professional use? Join us in the forest and discover Bengt Andersson's experience with a powerful and flexible trailer that delivers every day. Read the customer story and find out why the right equipment makes all the difference.

"I'm looking forward to many great years with this trailer."



See the interview

Advantages of Trejon Multiforest



1. Drawbar steering makes off-road driving easier. (Basic equipment from MF950)
2. Stable support legs ensure optimum occupational safety.
3. Flexible bunks and stakes (sliding along the frame).
4. Bogie axles for optimal riding in hilly terrain.
5. TRAC wheels with reinforced rims and valve protection.
6. Extra strong axles for maximum durability and wear resistance. (Operating approval for 25 or 40km/h with full permissible total weight)
7. The lighting is foldable.
8. Perfectly shaped and strong stakes.
9. Intelligently routed hydraulic lines
10. All parts powder-coated.
11. Protected lifting cylinder. (Basic equipment from V5500)
12. Robust protective gate, thoughtfully shaped
13. Cast high torque slewing mechanism
14. Robust standing platform on the drawbar for improved ergonomics and occupational safety (optional).
15. Self-oil supply with high-quality cast iron pump
16. STRENX heavy-duty steel in crane and trailer for high payloads with low dead weight.
17. Long telescopic extension for efficient loading.



Technical data

Forestry trailers

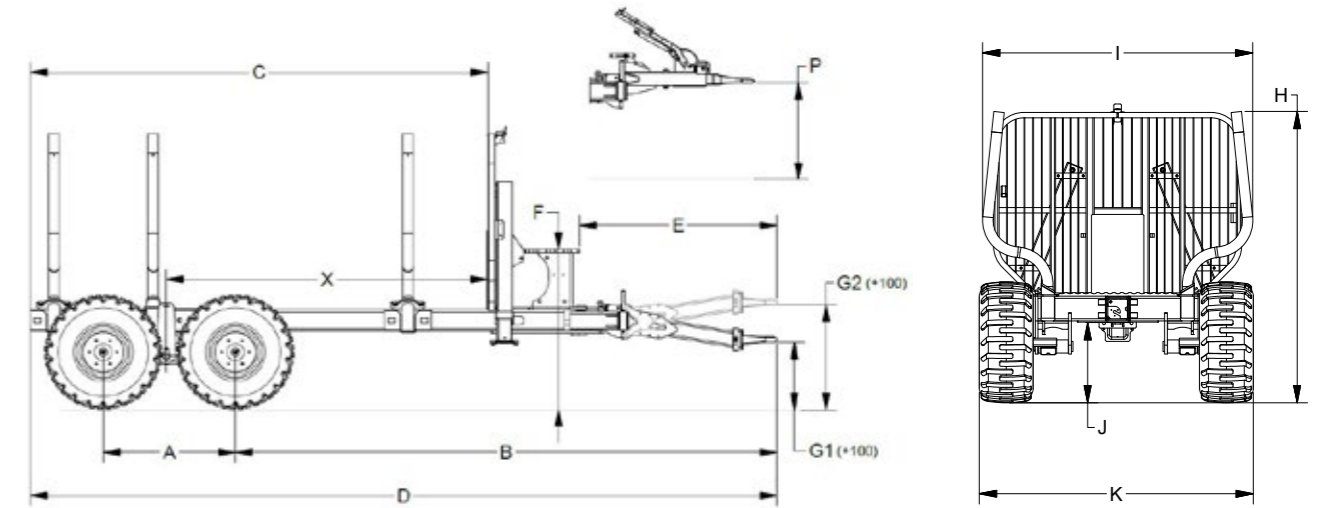
Forestry trailers							
Model	MF650	MF950	MF1050	MF1050BS	MF1202	MF1202TEC	MF1602
Total weight, t	6,5	9,5	10,5	10,5	12	12	16
Loading area, sqm	1,43	2,15	2,3	2,5	2,5	2,3	3
Frame system	Central beam	Central beam	Central beam	Central beam	Double frame	Double frame	Double frame
Brakes	☐	☐	☐	☐	☐	☐	☐
Frame dimension, mm	120x120x8	160x160x8	160x160x8	160x160x8	2x200x100x6	2x200x100x6	2x200x100x8
Stakes with bunks	2	2	2	2	4	4	4
Hydraulic support legs (telescopic/foldable)	- / ☐	■ / -	■ / -	■ / -	■ / -	- / ☐	- / ☐
Drawbar steering, number of cylinders	-	1	1	1	2	2	2
Steering	-	Drawbar steering	Drawbar steering	Bogie steering	Drawbar steering	Drawbar steering	Drawbar steering
Steering angle	-	±45°	±45°	±22°	±45°	±45°	±20°
Bogie angle	±25°	±18°	±18°	±18°	±18°	±19°	±15°
Movable bogie	-	■	■	-	-	-	-
Max. load over axles (25km/h, unbraked)	7,2	11,4	11,4	11,4	11,4	15	19
Wheel size*	300/80-15,3"	400/60-15,5" TRAC	400/60-15,5" TRAC	400/60-15,5" TRAC	520/50-17" TRAC	520/50-17" TRAC	400/55-22,5" TRAC
Weight (without crane and accessories), kg	880	1425	1490	1520	2200	2990	2950

(■) Standard (☐) Option (-) not available

*) Many wheel sizes are possible. Contact your Multiforest dealer for more information.

Recommended crane model	MF650	MF950	MF1050	MF1050BS	MF1202	MF1202TEC	MF1602
V4800	■	-	-	-	-	-	-
V5500	-	■	-	-	-	-	-
V6500	-	■	■	■	-	-	-
V6800	-	■	■	■	-	-	-
V7300	-	■	■	■	■	-	-
V7800	-	-	■	■	■	-	-
V8400	-	-	-	-	-	■	■
V9000	-	-	-	-	-	■	■

■ Recommended combination – Not recommended combination

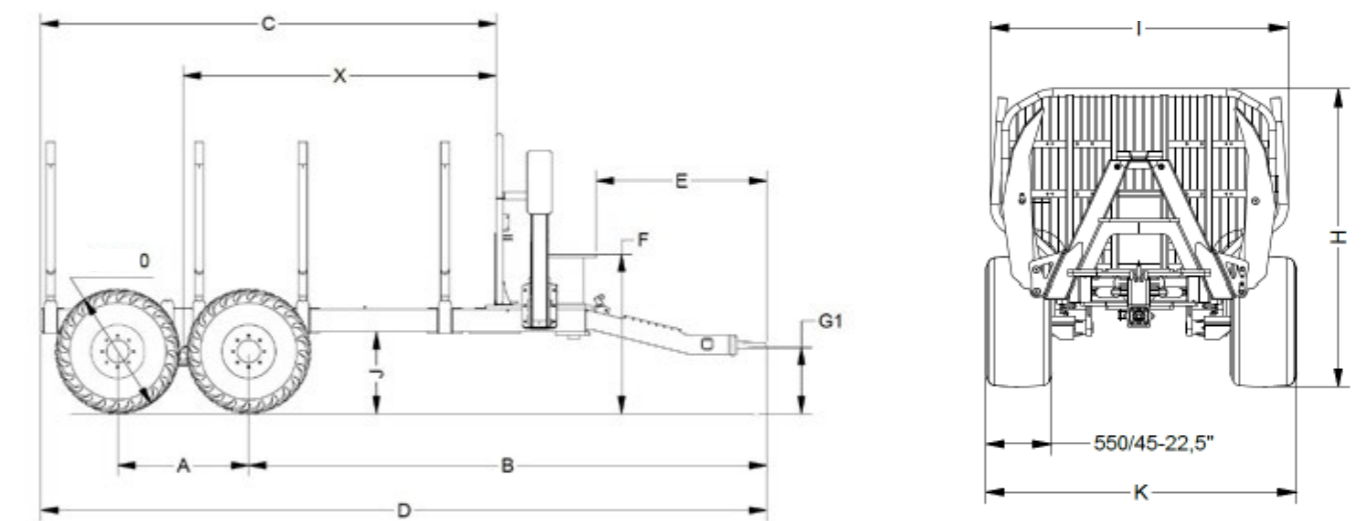


Central beam

Trailer	A, mm	B, mm	C, mm	D, mm	E, mm	F*, mm	G1*, mm	G2*, mm	H*, mm	I, mm	J*, mm	K*, mm	P ¹ , mm	X, mm
MF650	990	3010	3050	4680	1270	1225	445	730	1770	1720	530	1825	685	1900
MF950	990	4050	3420	5600	1460	1160	500	785	2090	1960	580	2005	740	2400 ²
MF1050	1180	3950	3420	5600	1500	1060	500	785	2090	2060	520	2030	-	2400 ²
MF1050BS	990	3940	3620	5800	1500	1170	500	785	2060	2090	530	2280	-	2300

All dimensions are measures in mm for trailers with standard wheels.

* This measure depends on the wheels size | ¹ P Measure for trailer with pushbrake. | ² X is adjustable with +/-200mm



Double frame

Trailer	A, mm	B, mm	C, mm	D, mm	E, mm	F*, mm	G1*, mm	H*, mm	I, mm	J*, mm	K*, mm	X, mm
MF1202	1260	4250	4115	6250	1500	1280	550-830	2190	2210	610	2390	2750
MF1202TEC	1150	4650	4130	6660	1830	1465	550-1025	2280	2395	700	2440	2700
MF1602	1150	4550	4000	6380	1500	1380	560	2450	2370	700	2495	2750

All dimensions are measures in mm for trailers with 520/50-17 (MF1202) or 550/45-22,5 (MF1602, 1202TEC) wheels.

*) This measure depends on the wheel size



Build your machine
in our machine
configurator





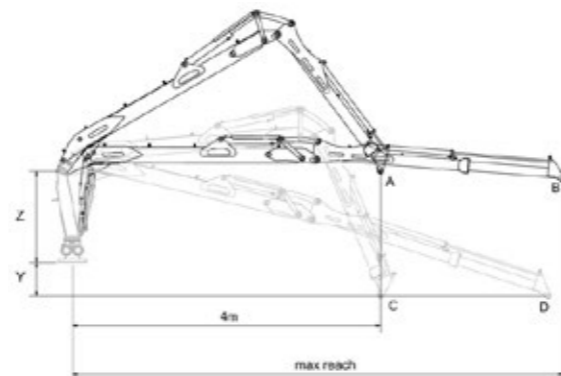
Forestry loading cranes

Technical Data						
Model	V4800	V5500	V6500	V6800	V7300	V7800
Reach, m	4,8	5,5	6,5	6,8	7,3	7,8
Hydraulic boom, m	0,6	-	1,0	1,6	1,9	1,9
Number of slewing cylinders	2	4	4	4	4	4
Torque, kNm	5,3	13,4	13,4	13,4	13,4	13,4
Slewing radius, degrees	420°	360°	360°	360°	360°	360°
Recommended pump capacity, l/min	20-40	25-55	25-55	35-55	35-55	35-55
Working pressure, bar	190	190	190	190	190	190
Weight of crane (empty), kg	320	565	610	720	735	745
Lifting moment, gross (kNm)	25,5	48	48	56	56	56
Max. lifting capacity *- A, 4 m kg	510	785	665	1040	1010	960
Max. lifting capacity *- B, max. boom kg	405	725	515	605	550	510
Max. lifting capacity *- C, 4 m kg	410	840	870	1130	1090	1040
Max. lifting capacity *- D, max. boom kg	365	790	560	495	495	455
Dimension Z, m	1	1,2	1,2	1,4	1,4	1,4
Dimension Y, m	0,4	0,4	0,4	0,4	0,4	0,4

*) Without grapple and rotator

Advantages

- ▲ Intelligent, slim design
- ▲ STRENX high-performance steel for high payloads
- ▲ Lubricatable bushings at all pivot points
- ▲ Telescope with up to 2m extension
- ▲ High-quality processed and powder-coated surfaces
- ▲ Cast slewing mechanism in oil bath with up to 13.4kNm slewing torque
- ▲ Protected hydraulic cylinders
- ▲ Optimally routed hydraulic piping
- ▲ High-quality HighFlex tubing



Build your machine in our machine configurator



S-Line Cranes

Technical Data		
Model	V8400	V9000
Reach, m	8,4	9,0
Hydraulic boom, m	2x1,5	2x1,5
Slewing cylinders, number	4	4
Torque, kNm	18,6	18,6
Slewing radius, degrees	390	390
Recommended pump capacity, L/min	55-90	55-90
Working pressure, bar	210	210
Weight of crane (empty), kg	1165	1195
Max. lifting capacity at 4 m, kg	1510	1425
Max. lifting capacity at max. reach, kg	600	525
Gross lifting torque (kNm)	87,4	87,4

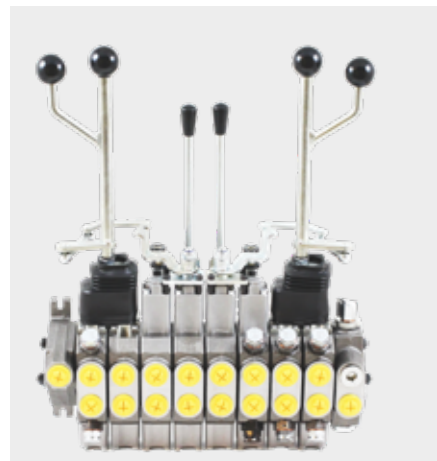
*) With the joint at a height of 2m, without grapple and rotator.

Advantages

- ▲ Intelligent, slim design for high payloads
- ▲ Double telescope with a reach of up to 9.0m
- ▲ Long range with short lay-off length
- ▲ High-quality processed and powder-coated surfaces
- ▲ More powerful skewing house, 18.6kNm torque
- ▲ STRENX high-performance steel for high payloads
- ▲ Lifting and swivel damping system already in the basic equipment
- ▲ Lubricatable bushings at all pivot points
- ▲ Protected hydraulic cylinders
- ▲ Optimally routed hydraulic piping
- ▲ High-quality HighFlex hoses

Hydraulic lifting and swiveling damping system as standard equipment

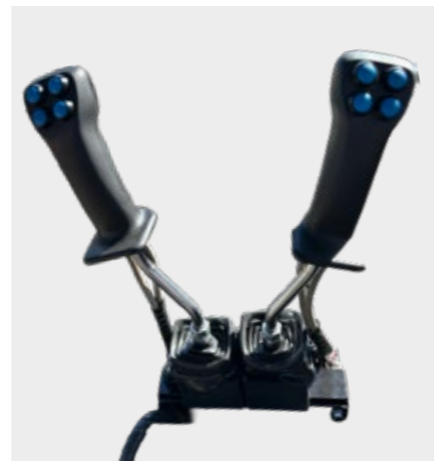
Accessories program



Mechanical rotary lever control
2 XYZ rotary levers plus 2 individual sections in the middle (support legs).



Electro-mechanical control
2 XY levers plus two electrical functions with rocker switches, as well as two separate mechanical functions in the middle (support legs)



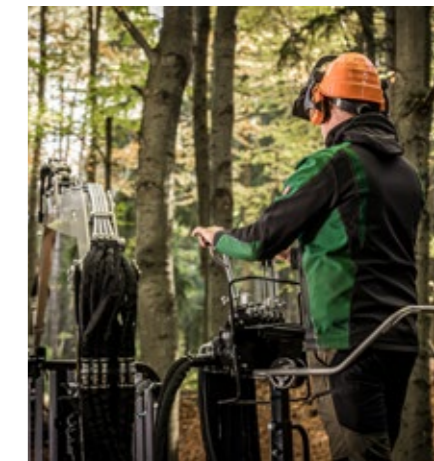
Lightweight control
2 XY levers plus 4 Electrical functions via push buttons. This control weighs only 9.5 kg and is particularly suitable for mounting on the rear of the tractor.



LED work lighting on the crane
Brightens up your workspace in the dark.



Oil cooler
The electric oil cooler prevents thermal problems on long working days, not only in summer.



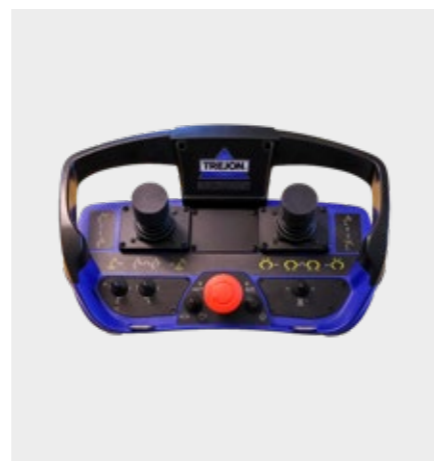
Safe operator stand
The safe operator position on the platform offers an optimal overview during loading and unloading.



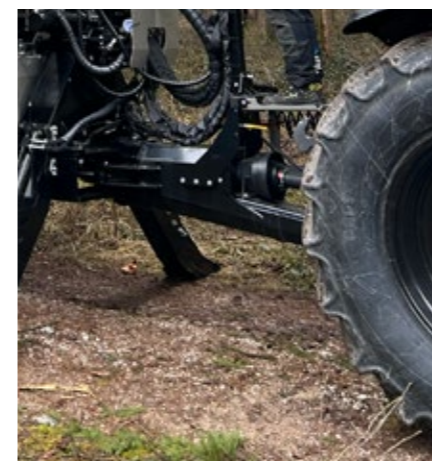
PCL Low Pressure Control
Proportional control with 2 XY functions (PCL) including 4 electrical functions via slider and push button on the levers. The slide is used to control the telescope and gripper open/close proportionally.



EHC joystick control
These joysticks can be attached in the tractor cab and provide comfort and flexibility to the user.



EHC radio remote control
Scanreco radio remote control with 6 proportional functions and 2 on/off functions. The controller includes charger, double battery pack and carrying strap.



Well-protected pump
High-quality cast iron pumps for comfortable working with hydraulic self-supply. The drawbar can be rotated for top or bottom hitch.



Toolbox
Sturdy aluminum box, well protected placed behind the grille; 400x300x245 mm.



Holder for chainsaw
The optional bracket is adapted to the most common sizes.



Build your machine in our machine configurator





Biomass box

For the transport of brushwood and energy wood on public roads without polluting them. Hot-dip galvanized, very stable and available for MF950-1202TECvw



Wheel drive

Wheel hub drive is an accessory that improves the off-road capability of the trailer in any conditions.



The advantages are as follows:

- ▲ Maximum thrust MF1050/MF1202 up to 13,500N, MF1602 up to 27,000N
- ▲ BlackBruin radial piston motors with an efficiency of 90-95%.
- ▲ 50% more thrust due to the effectiveness of the hydraulic motor and without mechanical power losses due to the role of the Robson drive system
- ▲ High torque right from the start with excellent properties at slow speeds up to maximum speed
- ▲ Constant 50-50 distribution between left and right sides, even when a wheel is in the air.
- ▲ Protected design in the wheel hub



Loading grapples

Our HARDOX grapples are lightweight, robust and durable. We use the advantage of Scandinavian HARDOX-steel to maximize the payload of the crane.

- G11: Opening width 110cm, Weight 52 kg.
- G100: Opening width 100cm, Weight 66 kg.
- G120: Opening width 120cm, Weight 95 kg.
- G120E brushwood grapple: opening width 120cm, Weight 125 kg.
- G130: opening width 130cm, Weight 115 kg.



Hydraulic radio winch with pulley

1 700kg pulling force with 40m of rope on the drum. The maximum rope length of the standard radio-controlled system is 60m. Can be mounted



under or on the crane. The protected mounting under the crane on MF950-1202 keeps the point of gravity in a low position.

Build your machine
in our machine
configurator





TREJON FÖRSÄLJNINGS AB

Företagsvägen 9 | 911 35 Vännäsby | Sweden
www.trejon.se | info@trejon.se



A good day.
A Trejon day.