

From serial number 0814XXXX and onwards



Instructions for Use and Maintenance

Bucket sweeper H150, H180, H220, H270



Note!
Read instructions before use



TREJON FÖRSÄLJNING AB
Företagsvägen 9
SE-911 35 VÄNNÄSBY
SWEDEN
Tel: + 46 (0)935 39 900
Webb: trejon.se



INTRODUCTION

Congratulations on your new TREJON BUCKET SWEEPER! The product is designed and manufactured by Trejon AB. The sweeper is made of first-rate materials and features components supplied by well-known manufacturers. Strict quality requirements and quality control criteria have been observed during all phases of design and production. This manual contains the instructions needed to use and maintain the sweeper in an efficient manner. By following the instructions in this manual carefully, you will ensure a long and trouble-free service life for your sweeper.

Please make sure that every driver and person in charge of maintenance reads this manual thoroughly before using the sweeper or starting maintenance work. Attention must be paid to safety factors in all situations. This manual is part of the sweeper and must be transferred to the new owner upon sale or handover.

Should this manual be lost or become illegible, obtain a new manual immediately from Trejon AB or via the company website at www.trejon.se.

Due to the continuous nature of its product development, Trejon AB reserves the right to make structural and technical changes without advance notification. Therefore, it is possible that some information in this manual may have changed after printing.

Please contact Trejon AB or the retailer of the sweeper, if you need more information on the use or maintenance of the sweeper.

The content of this manual is based on information available in February 2015.

Trejon AB cannot be held liable for any errors or deficiencies in the manual.

SAFETY COMES FIRST



In this manual, this safety symbol is featured next to all important safety-related information. Pay particularly close attention to these sections and observe all safety instructions carefully.

In addition to the instructions of this manual, all the effective laws, decrees and regulations must be followed when using and maintaining the bucket sweeper.

The maintenance and adjustment instructions in this manual must be followed. This ensures that the sweeper can be used safely and without interruptions.

If a fault occurs in the sweeper, please contact the retailer's maintenance service. Stop working immediately, if there is even the smallest chance of injury.

Do not exceed the manufacturer's recommended operating temperature ranges and pressure levels for the hydraulics.

Never disconnect a hydraulics hose by pulling on the hose, never paint a hose and never tighten the hydraulics connectors excessively, in order to prevent damage.

TABLE OF CONTENTS

1.	DECLARATION OF CONFORMITY	2
2.	PURPOSE OF USE	3
3.	SAFETY INSTRUCTIONS.....	3
3.1	General.....	3
3.2	Warning labels.....	3
4.	IDENTIFYING INFORMATION AND SPARE PARTS	5
4.1	Type plate.....	5
4.2	Spare parts	5
5	MAIN COMPONENTS OF THE SWEEPER.....	6
5.1	Sweeper from the side	6
5.2	Sweeper from the top	6
6	CONNECTING THE SWEEPER TO THE VEHICLE	7
6.1	Attaching the sweeper	7
6.2	Detaching the sweeper	7
6.3	Adjusting the sweeper	7
6.4	Sweeping.....	8
6.5	Using the high-pressure dust suppression system.....	8
6.6	Using the irrigation system	10
6.7	Driving the vehicle to another location.....	11
7	MAINTENANCE.....	11
7.1	General.....	11
7.2	Daily maintenance.....	12
7.3	Weekly maintenance.....	12
7.4	Cleaning the high-pressure nozzles.....	12
7.5	Maintenance after the sweeping season	12
7.6	Replacing the brush discs.....	13
8	TECHNICAL DATA.....	14
8.1	Hydraulics diagrams	14
8.2	Electrical diagrams	15
9	WARRANTY TERMS	16

1. DECLARATION OF CONFORMITY

EC-Certificate of Conformity

Conforming to EEC Directions 2006/42/EG

We **TREJON FÖRSÄLJNING AB**
 (name of supplier)

SE – 911 35 Vännäsby, Företagsvägen 9

 (full address of company – where this concerns authorized agents within the Common Market, also state the company name and manufacturer)

Declare in sole responsibility, that the product

Bucket sweeper OPTIMAL H150, H180, H220 och H270

(make, model)

to which this certificate applies, conforms to the basic safety and health requirements of EEC Directions 2006/42/EG,
 (if applicable)
 and to the other relevant EEC Directions.

— — —

.....
 (title and/or number and date of issue of the other EEC Directions)

(if applicable)

To effect correct application of the safety and health requirements stated in the EEC Directions, the following standards and/or technical specifications were consulted:

EN ISO 12100-1 : 2010 EN ISO 12100-2 : 2010

(title and/or number and date of issue of standards and/or specifications)



Henrik Johansson

Managing Director

(Name and job function of authorized person)

Vännäsby, 2016.12.01

(Place and date of issue)

2. PURPOSE OF USE

The Trejon bucket sweeper is designed for cleaning pavements, yards and streets. It has a high collection capacity and good sweeping result when driving in reverse. To achieve the best result, select the right sweeper for your vehicle.

You can also use the bucket sweeper to load snow or sand. Please exercise caution when doing so, the bucket is not intended for moving earth.

The sweeper can be equipped with a high-pressure dust suppression system and a pressure washer. High-pressure dust suppression ensures dust-free sweeping, and the pressure washers enables cleaning areas that are difficult to reach, as well as the vehicle.

3. SAFETY INSTRUCTIONS



Please read and observe the following safety-related instructions carefully.

3.1 GENERAL

Ensure that a sweeper of this type and weight can be attached to the tractor/loader in question.

Only persons who have familiarised themselves with the device and its functions may operate it.

Familiarise yourself with the sweeper and its operation before you start using it in a safe area in which hazardous situations are not likely.

Observe all warning and instruction labels on the sweeper. Do not operate the sweeper under the influence of alcohol, medication or narcotic substances. Fatigue may also lead to hazardous situations.

Never get close to the sweeper when the hydraulics system is connected, because a system failure may cause a crushing hazard.

Before use, ensure that all sweeper maintenance has been conducted correctly and on time.

Check the wear and adjustment of mechanical parts, and immediately replace any worn and damaged parts. Check the tightness of the bolts and nuts at regular intervals.

Never position yourself under the sweeper, unless the sweeper has been supported or lifted with an appropriate and locked mechanical lifting or support device. A failure of the vehicle's hydraulics system or some other unanticipated occurrence may result in a crushing hazard.

Do not modify the structure of the sweeper, as this may lead to unanticipated safety risks.

Do not allow an inexperienced person to handle the sweeper. Any party lending the device is responsible for any damage and accidents.

3.2 WARNING LABELS

The warning symbols attached to the product are described below. Ensure that you understand what they mean before you start using the product.

Clean/replace any unreadable or missing warning labels. More information on ordering the labels is available from Trejon AB.

Crushing hazard**Warning**

Do not enter this area when the machine is running. Beware of placing your hands in this area when the machine is in operation.

Remain at a sufficient distance from the machine when it is running or in motion. Neglecting this regulation may lead to severe injury or death.

Always read the instructions and safety regulations before use



Do not operate the device before you have carefully studied all the instructions and safety regulations and ensured that you understand their content. If you do not understand something, please contact Trejon AB. Misinterpretations may lead to severe injury or even death.

Beware of rotating rollers**Beware of rotating rollers**

Beware of placing your hands and feet in this area when the machine is in operation. Your clothes may also become caught between the rotating rollers.

4. IDENTIFYING INFORMATION AND SPARE PARTS

4.1 TYPE PLATE

The type plate of the bucket sweepers is located at the back of the brush cover, on the right-hand side.

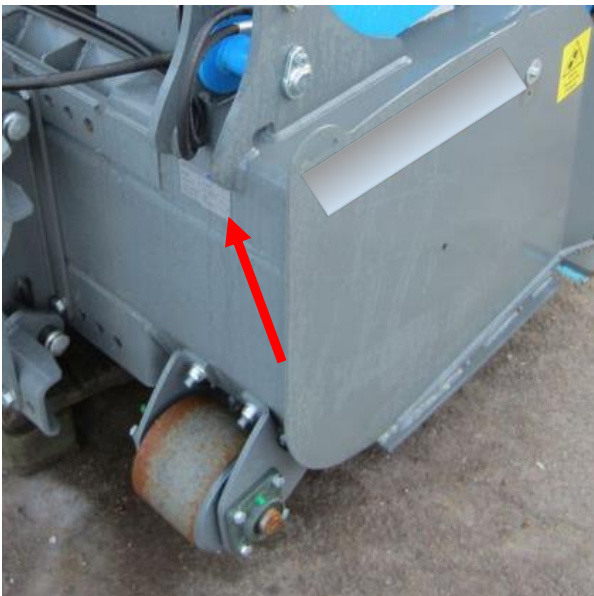


Figure 1

The type plate contains the following information:

- Model
- Serial number
- Weight

4.2 SPARE PARTS

Only use original spare parts relating to maintenance and repair, and ensure that the sweeper stays in its original condition.

Always provide the type and production number of the sweeper when ordering spare parts. Record the type and serial number of the sweeper in the space below.

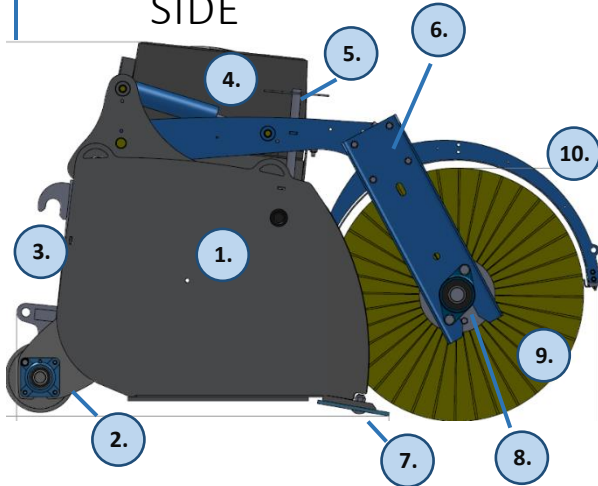
Type _____

Serial number _____

	<p><i>Ensure the structural safety and functionality of the sweeper, and only use original spare parts.</i></p>
--	-----------------------------------------------------------------------------------------------------------------

5 MAIN COMPONENTS OF THE SWEEPER

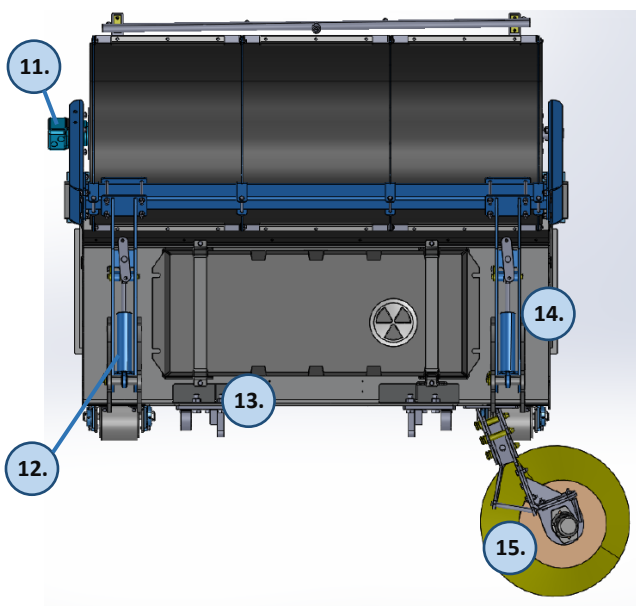
5.1 SWEEPER FROM THE SIDE



- 1) Bucket
- 2) Rear rollers (accessory)
- 3) Bolt connection and floating beams
- 4) Water tank (accessory)
- 5) Height adjustment for main brush
- 6) Arm
- 7) Bolt connected lip plate
- 8) Brush roller bearing (models H150 and H180)
- 9) Brush discs (outer diameter 700 mm and inner 7 inches in models H150–H180 and outer diameter 900 mm and inner 7 inches in models H220–H270).
- 10) Mudguard and bolt frames

Figure 2

5.2 SWEEPER FROM THE TOP



- 11) Main brush motor (on both sides in models H220 and H270)
- 12) Lift cylinder for brush
- 13) Electrical water pump or high-pressure hydraulics pump (accessory)
- 14) Pressure washer and hose reel (accessory)
- 15) Side broom (accessory)

Figure 3

6 CONNECTING THE SWEEPER TO THE VEHICLE

This section covers the safe attachment and detachment methods for the bucket sweeper. By observing these instructions, you can safely connect and disconnect the sweeper.

6.1 ATTACHING THE SWEEPER

It is recommended that you attach the sweeper on a level surface, as a slanted surface makes the process more difficult, and may result in the device being damaged.

Engage the handbrake for the duration of the connection process, in order to ensure that it is safe to position yourself between the sweeper and vehicle.

	<p><i>Never position yourself under the sweeper or the arms, unless they have been separately supported.</i></p>
--	------------------------------------------------------------------------------------------------------------------

When connecting the device for the first time, ensure that the quick fastening hooks fit their intended slots and that the locking pins can be properly locked into place. Also adjust the height limiters at a suitable level. It is advisable to check the connection and the height limiter adjustments before each use.

Begin connecting the hydraulics by ensuring that the hydraulic system is depressurised.

Next, clean the quick connectors of the sweeper and vehicle. Connect the hoses and electrical cables, as shown in section 8 (Technical data). It is recommended to mark the hoses with colours to facilitate reconnection.

6.2 DETACHING THE SWEEPER

Remember to engage the handbrake for the duration of the connection process. Never position yourself under the sweeper or the arms unless they have been separately supported.

First, disconnect the electrical cables and then the hydraulics hoses. Remember to protect the quick connectors and the electrical connector against weather and dirt.

If the sweeper will be in storage for an extended period of time, remember to lubricate it, according to the weekly maintenance instructions (section 7.3), before disconnection. Use all of the device's movements to ensure a thorough lubrication.

6.3 ADJUSTING THE SWEEPER

Adjusting the main brush

Adjust the height of the brush roller by allowing the discs to press against the ground by 1–2 cm. If the discs are in heavier contact with the ground, they will wear down. Adjust the brush height by turning the adjustment screws on the side of the arms (see Figure 2, no. 5). The correct disc height is shown in Figure 4.

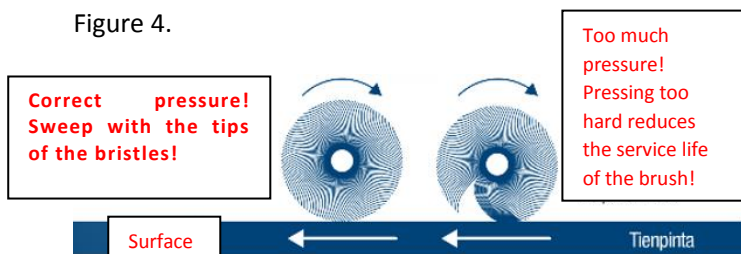



Figure 4

Adjust both ends at the same height, or the discs will wear unevenly.


Turning/replacing the blades

 *Do not press the bucket onto the ground. This will cause the abrasion plate blades to wear down and may damage the*


It is easiest to replace/adjust the blades when the bucket sweeper has been lifted up and the bucket or the vehicle arms are supported.

1. Engage the vehicle’s handbrake.
2. Lift the bucket sweeper to the appropriate height.
3. Support the bucket or vehicle arms in such a way that the bucket cannot move.
4. Turn off the ignition.
5. Remove the blade fastening bolts and detach the blades (take care to ensure that the blade does not fall on you).
6. Turn or replace the blades and fasten securely.

Monitor the blades for signs of wear regularly. Dry asphalt and crushed stone cause the blades to wear down quickly. Replacing the blades early protect the bucket from wearing down.

 *Monitor the blade condition regularly and replace them on time.*

6.4 SWEEPING

 *Before sweeping, always ensure that the mechanical fastening is locked, and that the electrical and hydraulics connections have been appropriately carried out.*

The bucket sweeper can be operated both forwards and backwards. Usually, large debris is collected with the bucket by sweeping forward. Driving in reverse allows you to finish the surface.


It is advisable to place the bucket sweeper on the ground so that only the abrasion plate touches the ground. It is advisable to keep the back of the bucket 20–40 mm above the ground. If the brush is equipped with rear rollers, it can be lowered on the ground to rest on the rollers. In this case, you can even lift the lip plate of the bucket off the ground during sweeping without compromising the sweeping result.

Trejon bucket sweepers are equipped with a floating mechanism. If the sweeper is equipped with support wheels, adjust the floating mechanism in the middle of the wheel. This way, the brush can move freely both upwards and downwards.

If the brush has no support wheels, ensure that only the lip plate of the brush touches the ground while the floating mechanism is adjusted high.

6.5 USING THE HIGH-PRESSURE DUST SUPPRESSION SYSTEM


Sweepers can be equipped with a high-pressure dust suppression system (accessory), which makes sweeping virtually dust-free. In addition to dust suppression, the system can be used for pressure washing during sweeping.

 *Never direct the water jet towards people or animals. High-pressure water can cause serious accidents.*

Using the high-pressure pump for the first time:

Adjust the water pressure of the high-pressure pump before operation. The adjustment instructions are below.

1. The nozzles of the sweeper must be activated (Figure 5) (valve 2 in position B).
2. Connect the electrical reel on the adjustment mechanism (the pump is switched on).
3. Turn the ON/OFF valve (Figure 6) anticlockwise to the OFF position. This will switch the sweeping mechanism off.
4. Switch the hydraulics on and check the water pressure.
5. Adjust the water pressure at approximately 40–180 bar. (Figures 7 and 8) (Screw 1 is adjusted with an 8-mm hexagon spanner).

 *The water pressure of the pressure pump may not exceed 200 bars under any circumstances.*

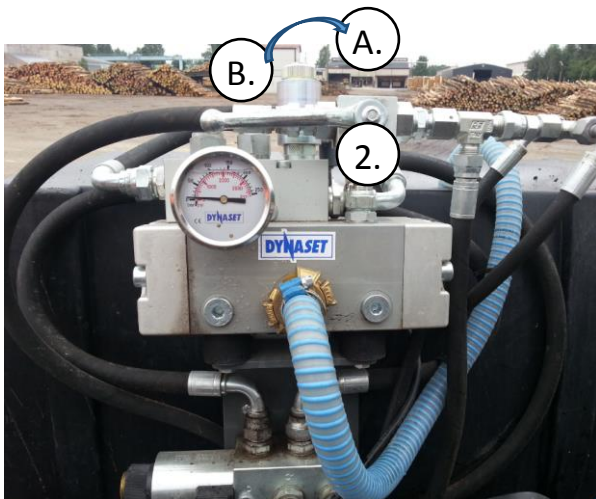


Figure 5

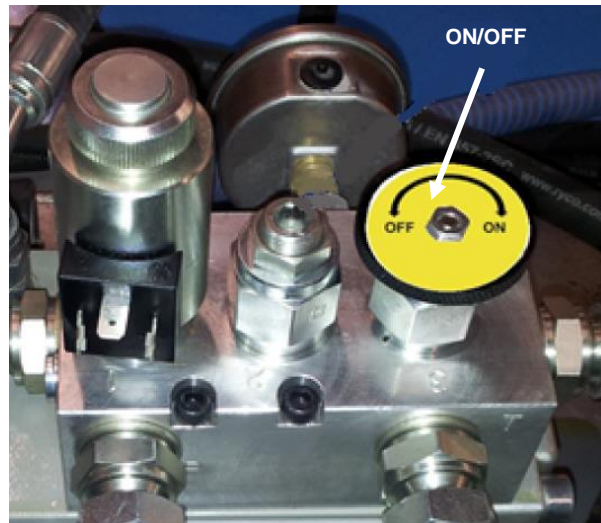


Figure 6

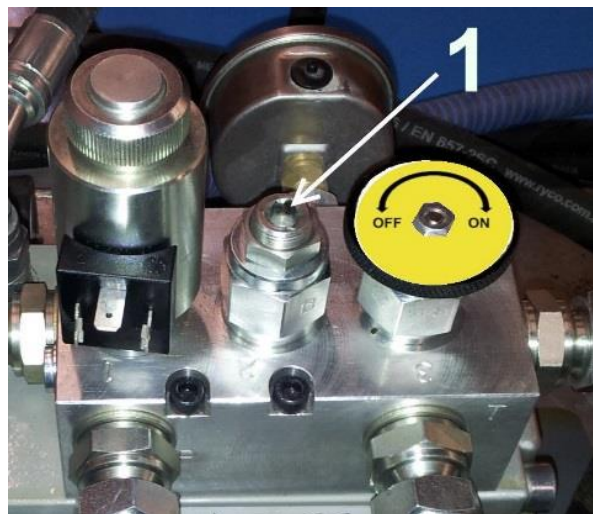


Figure 7



Figure 8

Using the high-pressure pump during sweeping:

Check the water pressure before operation by reading the meter on top of the pump. The operating pressure range of the high-pressure pump is 40–180 bar. High water pressure increases the amount of water mist, but it also increases consumption.

Note! The water pressure during operation also affects the water pressure of the washing gun. Therefore, please take care to check the water pressure both when the control switch is on and off.

Connecting the electrical valve activates the washer. Valve 2 (Figure 5) must be in position B.

Using the high-pressure washing gun:

When you are using only the washing gun, turn the rotation hydraulics of the brush off by turning the control switch on the pump (Figure 6). Activate the washing gun by turning the valve (number 2 in Figure 5) to position A.

Valve 2 (Figure 5) activates the washing nozzles (position B) or the manual washer (position A).

Storing the washer in cold weather:

Drain the washer after use or fill it with windscreen washing fluid (this is the better alternative), if it is to be stored at temperatures below +1°C!

Draining instructions:

- Remove the draining plug from bottom of the water tank.
- Allow the pump to run with valve 2 in position A (Figure 5) until all the water is drained from the nozzles.
- Turn valve 2 to position B and pull the trigger. Allow the pump to run until all the water is drained from the washing gun.

Filling with washing fluid:

- Remove the draining plug from bottom of the water tank.
- Extract the suction hose from the water tank and place it in a container with windscreen washing fluid (resistant to temperatures of up to -35°C).
-
- Use the pump for the brush nozzles until washing fluid comes out of the nozzles.
- Turn the ball valve to the washing gun position and use the gun until only washing fluid comes out of it.
- Freezing water will damage the hose reel and washer. Thus, it is important to drain the system and fill it with washing fluid, if the sweeper is to be stored at temperatures below +1°C.
- The warranty does not cover equipment damage caused by freezing!

6.6 USING THE IRRIGATION SYSTEM

A normal irrigation system is also available for sweepers. This section covers the use of the irrigation system.

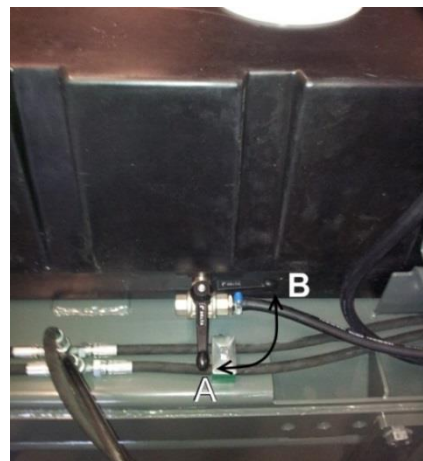


Figure 9

The irrigation system of a bucket sweeper is active when water is added to the tank and the power is connected to the water pump (red + and black -).

Remember to check the pump's voltage before connection. When connecting the water pump, it is also advisable to install a fuse (10A) in the red + cable as close to the battery as possible to prevent vehicle fire.

There is a draining valve for draining the water tank. The valve is positioned behind the tank (Figure 9). It can be used to select whether the water is fed into the pump (position A) or directly out (position B).

6.7 DRIVING THE VEHICLE TO ANOTHER LOCATION

	<p><i>Exercise great caution when driving the sweeper to another location. Read the text below and do not raise the sweeper unless you must.</i></p>
--	------------------------------------------------------------------------------------------------------------------------------------------------------

IMPORTANT: Raise the sweeper high and check its condition before setting off. Reduce the speed if the road is uneven. Excessive speed will damage the sweeper.

7 MAINTENANCE

7.1 GENERAL

	<p>Observe the following instructions!</p> <ul style="list-style-type: none"> • When performing maintenance or repair measures, observe all safety-related laws, decrees and regulations, as well as the safety instructions in this manual. • Park the vehicle on an even and firm surface. • Lower the sweeper to rest on the wheels and lip plates or on the bucket. • Prevent the vehicle from moving. • Stop the motor of the vehicle and remove the ignition key. • Only use appropriate and suitable tools that are in good condition. • Observe a safe working procedure under all circumstances and dress appropriately for the work tasks. • Wear eye protection and a respirator, if necessary. • Remember to reinstall all covers and safety equipment that may have been removed. • Ensure that all labels of the machine are in good condition after the maintenance work. Replace damaged labels with new ones. • Collect waste oil, liquids and used filters, and deliver them to a processing plant for hazardous waste. • Do not allow oil or other fluids to spill on the ground, and take care of your environment.
--	------------------------------------------------------------------------------------------------------------------------------------------------------------------------------------------------------------------------------------------------------------------------------------------------------------------------------------------------------------------------------------------------------------------------------------------------------------------------------------------------------------------------------------------------------------------------------------------------------------------------------------------------------------------------------------------------------------------------------------------------------------------------------------------------------------------------------------------------------------------------------------------------------------------------------------------------------------------------------------------------------------------------------------------------------------------------------------------------------------------------------------------------------------------------------------------------------------------------------------------------------------------

7.2 DAILY MAINTENANCE

It is recommended to check the sweeper daily to prevent problems.

The daily maintenance measures encompass the following inspections:

- Check the wear of the brush discs.
- Check the wear of the lip plate and replace the plate, if necessary.
- Check that there are no leaks in the hydraulics and that the hoses are in good condition.
- Check the overall mechanical condition of the sweeper.
- Adjust the sweeper height to an appropriate level.
- Check the height of the side brush (accessory).
- Grease the flotation plugs daily.

7.3 WEEKLY MAINTENANCE

In addition to daily maintenance, conduct the following measures.

- Check the tension of the fastening bolts of the joints and tighten them, if necessary.
- Grease the brush roller bearing (models H150 and H180). The recommended lubricant is Neste OH GREASE or similar.

7.4 CLEANING THE HIGH-PRESSURE NOZZLES

The high-pressure nozzles may become blocked, if water is not fed to them continuously. It is easiest to clean the nozzles with an ultrasonic washer, available at well-stocked car shops (average price EUR 40). You can also clean the nozzles with a pin or another sharp object.

Detach the nozzles with a 9/16-inch ring spanner or adjustable spanner. Each nozzle has a filter that can be turned open at the frame of the nozzle.



Figure 10

7.5 MAINTENANCE AFTER THE SWEEPING SEASON

We recommend that you perform at least the measures that are listed in sections 7.2 and 7.3. In addition, it is advisable to paint and varnish the sweeper, if the paint coating is badly worn. It is recommended to perform maintenance at the end of the season, so that parts with possible wear can be repaired before they rust.

The code for the grey colour used on the sweepers is RAL7043 and the code for the blue colour is

RAL5015. For a more thorough painting in the autumn, we recommend a two-component anti-corrosion paint, such as Tikkurila Temadur SC80 or Teknos Teknodur Combi 3430. Please ensure that you clean the surface to be painted with a silicone removal agent before painting.

Remember to drain the water tanks before winter storage! Water expands upon freezing and causes the tank to bulge and possibly rupture. The high-pressure water system must also be drained. For more detailed information, see section 6.5 Replacing the brush discs.

7.6 REPLACING THE BRUSH DISCS

Disconnecting the brush roller is straightforward, if you observe the following instructions.

Disconnecting the brush roller (H150 and H180):

1. Lower the brush roller onto the ground.
2. Turn off the vehicle and engage the handbrake.
3. Detach the four fastening bolts on the motor (Figure 11).
4. Detach the two bearing fastening bolts.
5. Pull the motor outward to release the roller. (You do not need to detach the hoses).

Disconnecting the brush roller (H220 and H270):

1. Lower the brush roller onto the ground.
2. Turn off the vehicle and engage the handbrake.
3. Detach (four bolts/motor) (Figure 11).
4. Pull the motor outwards to release the roller. (You do not need to detach the hoses).

Replacing the brush discs (H150–H180):

It is not necessary to remove the flange bearing when replacing the discs. Only remove the four M10 bolts behind the bearing (Figure 12). The discs can be removed after removing the flange shaft from the roller.

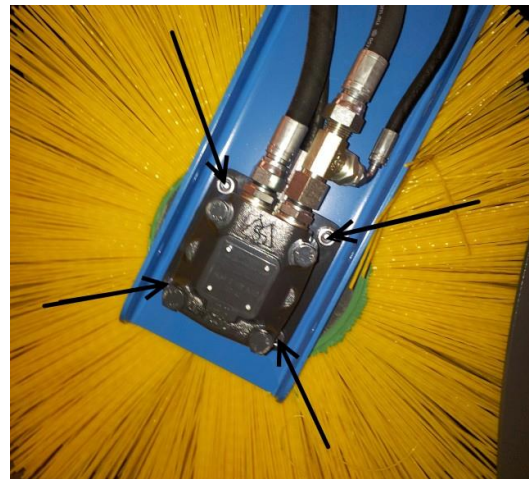


Figure 151



Figure 12

Replacing the brush discs (H220–H270):

The brush discs can be replaced in the same way as in model H220, but in this model a simple flange is used in place of the flange shaft.

Installing new brush discs:

The brush discs feature a small holding nub on the inside rim. Place this in the opposite position in every other, disc as the position of the nub is slightly elevated. If you position all brush discs in the same way, the discs will be slightly slanted.

It is advisable to position the brush roller vertically during the attachment of new brush discs. It is a good idea to place one or two extra brush discs at the roller end (the brush discs protrude 1–2 cm past the brush roller), so that the brush roller is sufficiently compressed when the brush flange is reinstalled on the brush end. This will prevent the holding nubs of the discs from breaking.

8 TECHNICAL DATA

8.1 HYDRAULICS DIAGRAMS

Sweeper hydraulics vary, depending on the vehicle’s properties. This section covers the different hydraulics connections.

There are four different hydraulics diagrams for bucket sweepers. The following sections present the hydraulic diagrams of the various options and list the kinds of hydraulic arrangements that each diagram requires.

Bucket sweeper H150–H180 with an electrical valve (two hoses)

The vehicle must feature a double cylinder hydraulics arrangement and an on/off switch in the cabin. The hydraulics system is as shown in Figure 13, but without motor M2.

Bucket sweeper H150–H180 without a valve (four hoses)

The vehicle must feature two double cylinder hydraulics arrangements. The hydraulics system is as shown in Figure 14, but without motor M2.

Bucket sweeper H220–H270 with an electrical valve (two hoses)

The vehicle must feature a double cylinder hydraulics arrangement and an on/off switch in the cabin. The hydraulics system is as shown in Figure 13.

Bucket sweeper H150–H180 without a valve (four hoses)

The vehicle must feature two double cylinder hydraulics arrangements and an on/off switch in the cabin. The hydraulics system is as shown in Figure 14.

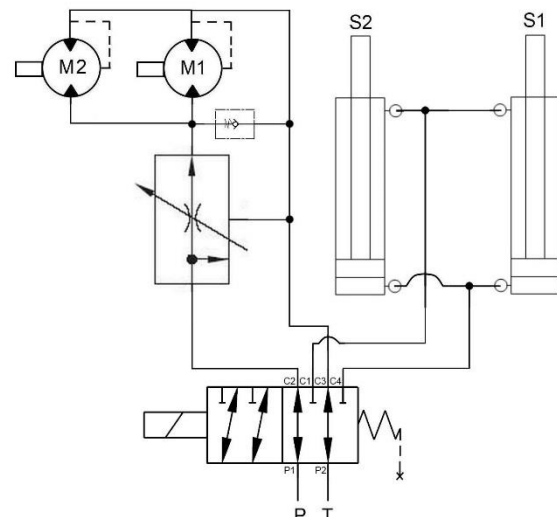


Figure 163

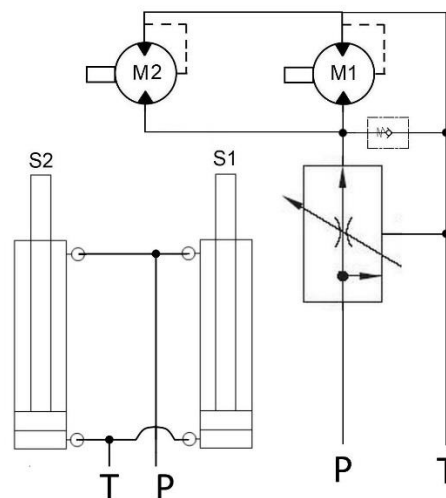


Figure 7

- M1 = Main brush motor, left
- M2 = Main brush motor, right (H220–H270)
- S1 = Lift cylinder for brush roller, left
- S2 = Lift cylinder for brush roller, right
- P = Pressure line
- T = Return line

8.2 ELECTRICAL DIAGRAMS

This section covers the electrical connection diagrams of the sweepers.

Figure 15 shows the electrical connection diagram for 6/2 valves, which is used in all bucket sweepers. Remember to install fuses in the connections, as connections made without a fuse cause a fire hazard.

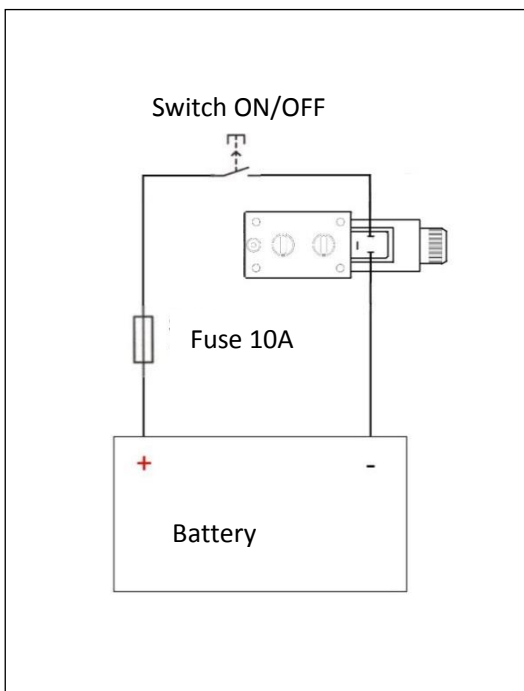


Figure 8

The connections of the wiring harnesses supplied with the sweepers have been made as follows:

Single-coupling cable: Brown = plus, blue = minus, green-yellow = extra.

Two-coupling cable: black = the plus of the plug at the end of the wire, brown = the plus of the other plug, blue = common minus.

Three-coupling cable: Wire 1 = plug A, wire 2 = plug B, wire 3 = plug C, green-yellow = common minus.

The couplings feature LED lights that are lit when power is supplied to the couplings.



Figure 9

The sweeper can be equipped with a three-knob control unit as an accessory. The control unit can use a plug or a cigarette lighter as power source. The plug delivered with the product can be connected to both ends (detach by rotating to move to the other end).

Connect the trailer plug to the plug on the sweeper. The control unit is connected when you switch the device on and the knobs turn red.

9 WARRANTY TERMS



TREJON AB
Företagsvägen 9
SE – 911 35 Vännäsby

Guarantee- /assignment certificate

- | | |
|------------------------------|-------------------------------------------------------------------------------------------------------------------------------------------------------------------------------------------------------------------------------------------------------------------------------------------------------------------------------------------------------------------------------------------------------------------------------------------------------------------------------------------------------------------------------------------------------------------------------------------------------------------------------------------------------------------------------------------------------------------------------------------------------------|
| Guarantee terms | - Valid between retailer (Trejon AB dealer) and machine purchaser. |
| General about guarantee | - In order to obtain valid guarantee terms set forth below, and the specific guarantee terms set by each provider. These are attached to the user manual for each machine, as appropriate. |
| Validity of guarantee | - The guarantee is 12 months from date of purchase.
In some cases, the guarantee can be limited by running time. |
| The guarantee covers | - Damaged parts, which have broken down because of defective production operations of materials in course of <u>normal use of the machine</u> .
- Only the labor cost for replacement of defective warranted part. |
| The guarantee does not cover | - Transport costs applicable to the machine or the parts.
- Travel costs.
- Any resulting costs incurred as a result of damage to the machine.
- If the machine has been modified by the owner.
- Damage due to normal wear and tear of the machine – Not related to manufacturing defects, poor service, user inexperience or use of spare parts that are not original.
- Excessive or inappropriate use of the machine.
- The guarantee is not applicable to parts which are subject to wear, for example hoses, sealing, oil, belts, batteries, chains, knives etc.
- The guarantee period for replaced parts during the guarantee period expires with the machine's guarantee.
- Normal adjustments, maintenance or supervision |
| Guarantee procedures | - Contact place of purchase as soon as any damage or malfunction is detected. Do not use the machine if the damage can be worse.
- Guarantee repairs must be performed by Trejon AB approved workshop. |

ATTENTION! The guarantee shall enter into force provided that the machine **GUARANTEE/ ASSIGNMENT CERTIFICATE** has been fully completed and signed by both parties (archived by the seller), and recorded on the Trejon web portal no later than 14 days from date of sale (the seller is responsible for this happening).

Assignment certificate:

Machine Buyer shall confirm with his signature that he had received manual containing operating instructions, and received information about the operating, security and maintenance requirements described in this and made the final inspection of the machine.

PLEASE FILL IN!



Product: _____	Serialno. _____
Salesman: _____	Company: _____
Signature of salesman: _____	Date of purchase: _____
Name of buyer: _____	Telephone: _____
E-mail: _____	
Address: _____	Zipcode: _____
City: _____	Country: _____
Date: _____	Signature of buyer: _____

Product serial number

